

Alpha-tubulin Antibody

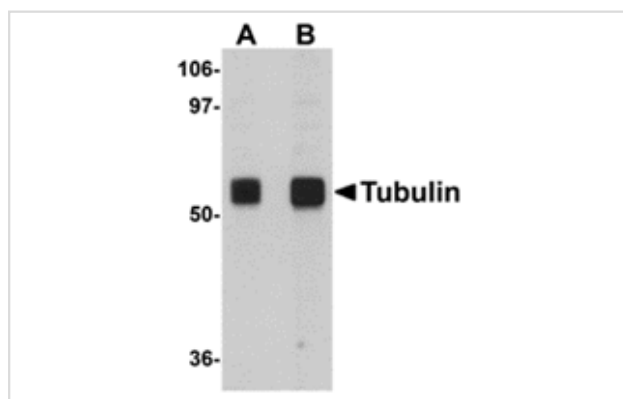
Catalog No: #24864

Orders: order@signalwayantibody.comSupport: tech@signalwayantibody.com

Description

Product Name	Alpha-tubulin Antibody
Clonality	Polyclonal
Purification	Affinity chromatography purified via peptide column
Applications	ELISA WB
Species Reactivity	Hu Ms Rt
Immunogen Type	Peptide
Immunogen Description	Raised against a 16 amino acid peptide near the amino terminus of human Tubulin.
Target Name	Alpha-tubulin
Other Names	Alpha-tubulin, Tubulin alpha-1A, TUBA1A, TUBA3, LIS3
Accession No.	Swiss-Prot:Q13748Gene ID:113457
Uniprot	Q13748
GeneID	113457;
Concentration	1mg/ml
Formulation	Supplied in PBS containing 0.02% sodium azide.
Storage	Antibody can be stored at 4°C up to one year. Antibodies should not be exposed to prolonged high temperatures.

Images



Western blot analysis of Tubulin in rat brain tissue lysate with Tubulin antibody at (A) 0.5 and (B) 1 ug/mL.

Background

Alpha-tubulin belongs to the tubulin superfamily, which is composed of six distinct families. Along with beta-tubulins, alpha-tubulins are the major components of microtubules. These microtubules are involved in a wide variety of cellular activities ranging from mitosis and transport events to cell movement and the maintenance of cell shape. Alpha- and beta-tubulin dimers are assembled to 13 protofilaments that form a microtubule of 22-nm diameter. Tyrosine ligase adds a C-terminal tyrosine to monomeric alpha-tubulin. Assembled microtubules can again be detyrosinated by a cytoskeleton-associated carboxypeptidase. Another post-translational modification of detyrosinated alpha-tubulin is C-terminal polyglutamylation, which is characteristic of microtubules in neuronal cells and the mitotic spindle. Like GAPDH and beta-Actin, this antibody makes an excellent loading control in immunoblots.

Note: This product is for in vitro research use only