

ZBED3 Antibody

Catalog No: #24869

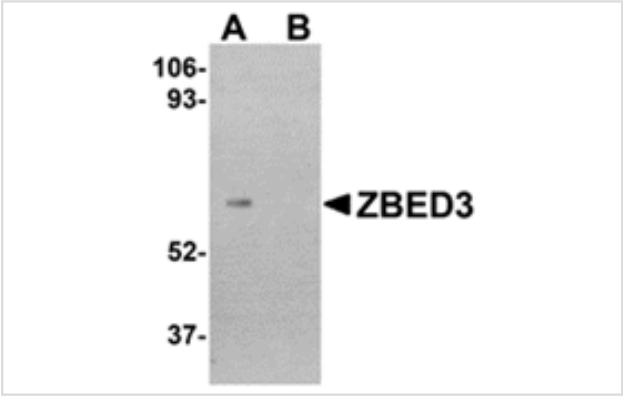


Orders: order@signalwayantibody.com
Support: tech@signalwayantibody.com

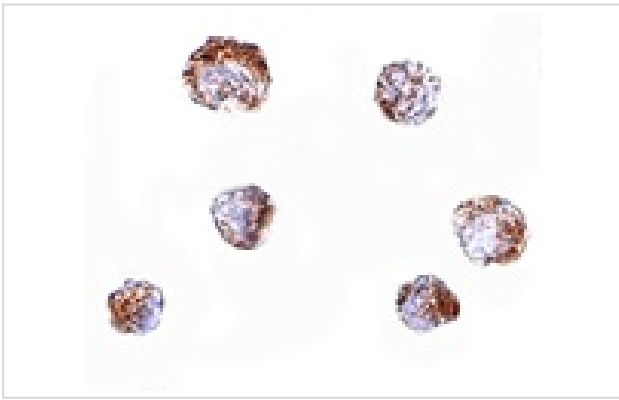
Description

Product Name	ZBED3 Antibody
Host Species	Rabbit
Clonality	Polyclonal
Purification	Affinity chromatography purified via peptide column
Applications	ELISA WB ICC
Species Reactivity	Hu
Specificity	This antibody is predicted to have no cross-reactivity to ZBED1 or ZBED2.
Immunogen Type	Peptide
Immunogen Description	Raised against a 15 amino acid peptide from near the carboxy terminus of human ZBED3.
Target Name	ZBED3
Other Names	Zinc finger BED-type domain containing 3
Accession No.	Swiss-Prot:Q96IU2Gene ID:84327
Uniprot	Q96IU2
GeneID	84327;
Concentration	1mg/ml
Formulation	Supplied in PBS containing 0.02% sodium azide.
Storage	Can be stored at -20°C, stable for one year. As with all antibodies care should be taken to avoid repeated freeze thaw cycles. Antibodies should not be exposed to prolonged high temperatures.

Images



Western blot analysis of ZBED3 in human lung tissue lysate with ZBED3 antibody at 1 ug/mL in (A) the absence and (B) the presence of blocking peptide.



Immunocytochemistry of ZBED3 in A549 cells with ZBED3 antibody at 20 ug/mL.

Background

Axin is a key modulator of the Wnt/beta-catenin pathway and acts as a scaffold protein in phosphorylating and degrading cytoplasmic beta-catenin. ZBED3, a member of the Zinc finger BED-type domain containing superfamily, has been recently identified as an Axin-interacting protein and has been suggested to modulate the Wnt/beta-catenin signaling pathway. RNA interference (RNAi) experiments targeting ZBED3 RNA attenuated Wnt-induced beta-catenin accumulation, lymphoid enhancer binding factor-1-dependent luciferase reporter activity, and Wnt gene expression.

Note: This product is for in vitro research use only