

beta-Galactosidase Antibody

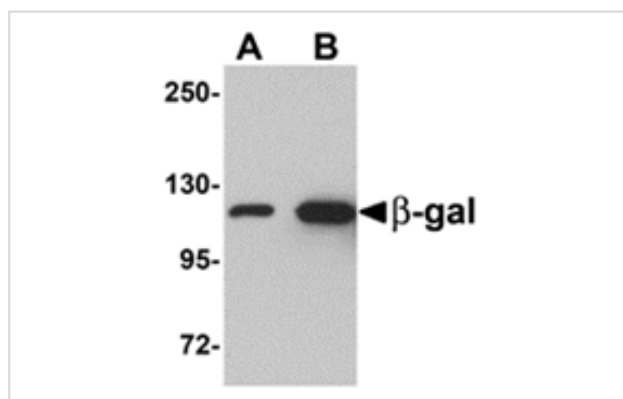
Catalog No: #24889

Orders: order@signalwayantibody.comSupport: tech@signalwayantibody.com

Description

Product Name	beta-Galactosidase Antibody
Host Species	Chicken
Clonality	Polyclonal
Purification	Affinity chromatography purified via peptide column
Applications	ELISA WB
Species Reactivity	E.coli
Immunogen Type	Peptide
Immunogen Description	Raised against a 17 amino acid peptide from near the amino terminus of E. coli beta-gal.
Target Name	beta-Galactosidase
Other Names	beta-Galactosidase, beta-galactosidase, beta-gal
Accession No.	Swiss-Prot:Q8FKG6Gene ID:
Uniprot	Q8FKG6
Concentration	1mg/ml
Formulation	Supplied in PBS containing 0.02% sodium azide.
Storage	Can be stored at -20°C, stable for one year. As with all antibodies care should be taken to avoid repeated freeze thaw cycles. Antibodies should not be exposed to prolonged high temperatures.

Images



Western blot analysis of (A) 5 and (B) 25 ng of b-gal with b-gal antibody at 1 ug/mL.

Background

Beta-galactosidase (beta-gal), an inducible enzyme that catalyses the hydrolysis of lactose and other beta-galactosides into monosaccharides, is a product of the LacZ operon, and is a homo-tetrameric protein consisting of four identical subunits of approximately 114 kDa each. The enzyme is commonly used as a reporter gene in molecular biology to assess the efficiency of transfection.

Note: This product is for in vitro research use only