

Albumin Antibody

Catalog No: #24891

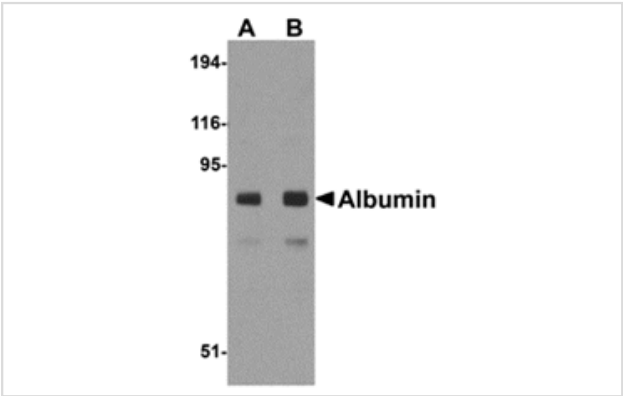


Orders: order@signalwayantibody.com
Support: tech@signalwayantibody.com

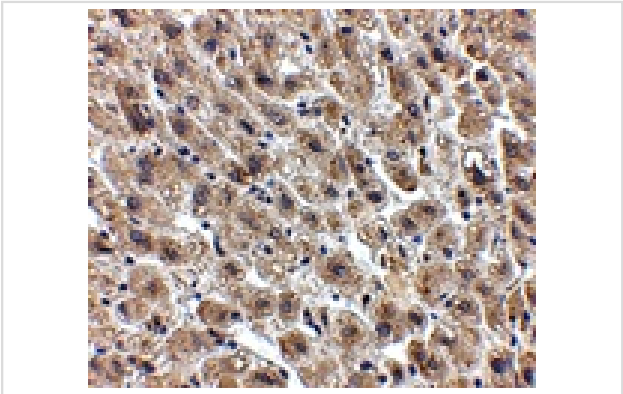
Description

Product Name	Albumin Antibody
Host Species	Chicken
Clonality	Polyclonal
Purification	Affinity chromatography purified via peptide column
Applications	ELISA WB IHC
Species Reactivity	Hu Ms Rt
Immunogen Type	Peptide
Immunogen Description	Raised against a 13 amino acid peptide near the center of human Albumin.
Target Name	Albumin
Other Names	Alb, serum albumin
Accession No.	P02768
Uniprot	P02768
GeneID	213;
Concentration	1mg/ml
Formulation	Supplied in PBS containing 0.02% sodium azide.
Storage	Can be stored at -20°C, stable for one year. As with all antibodies care should be taken to avoid repeated freeze thaw cycles. Antibodies should not be exposed to prolonged high temperatures.

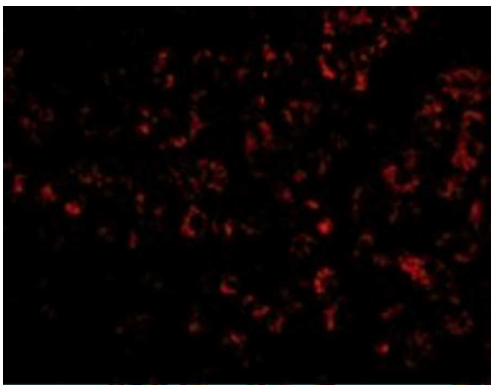
Images



Western blot analysis of Albumin in mouse liver tissue lysate with Albumin antibody at (A) 1 and (B) 2 ug/mL.



Immunohistochemistry of Albumin in human liver tissue with Albumin antibody at 2.5 ug/mL.



Immunofluorescence of Albumin in mouse liver tissue with Albumin antibody at 20 µg/ml.

Background

Albumin is a soluble, monomeric protein which comprises about one-half of the blood serum protein. It functions primarily as a carrier protein for steroids, fatty acids, and thyroid hormones and plays a role in stabilizing extracellular fluid volume. Albumin is synthesized in the liver as preproalbumin which has an N-terminal peptide that is removed before the nascent protein is released from the rough endoplasmic reticulum. The resulting product, proalbumin, is in turn cleaved in the Golgi vesicles to produce the secreted albumin. At least two isoforms of Albumin are known to exist.

Note: This product is for in vitro research use only