

ZCRB1 Antibody

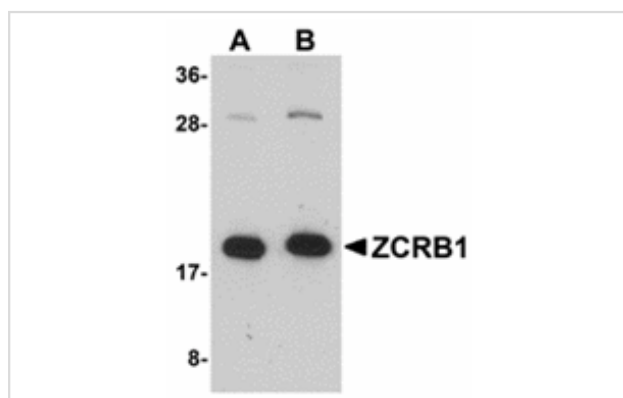
Catalog No: #24915

Orders: order@signalwayantibody.comSupport: tech@signalwayantibody.com

Description

Product Name	ZCRB1 Antibody
Host Species	Rabbit
Clonality	Polyclonal
Purification	Affinity chromatography purified via peptide column
Applications	ELISA WB
Species Reactivity	Hu Ms Rt
Immunogen Type	Peptide
Immunogen Description	Raised against a 17 amino acid peptide near the carboxy terminus of human ZCRB1.
Target Name	ZCRB1
Other Names	Zinc finger CCHC-type and RNA binding motif 1, ZCCHC19, MADP-1, RBM36
Accession No.	Swiss-Prot:Q8TBF4 Gene ID:85437
Uniprot	Q8TBF4
GeneID	85437;
Concentration	1mg/ml
Formulation	Supplied in PBS containing 0.02% sodium azide.
Storage	Can be stored at -20°C, stable for one year. As with all antibodies care should be taken to avoid repeated freeze thaw cycles. Antibodies should not be exposed to prolonged high temperatures.

Images



Western blot analysis of ZCRB1 in Raji cell lysate with ZCRB1 antibody at (A) 1 and (B) 2 ug/mL.

Background

ZCRB1 is a nuclear protein first identified in a differential display screen involving morphine-dependence-related genes. Its expression is increased following morphine treatment and has been observed to be elevated in HepG2 cells. ZCRB1 contains a CCHC-type zinc finger RNA-binding motif and can interact with the DBA-binding domain of the stem cell regulator C/EBP transcription factors. ZCRB1 was identified as one of the protein components of U11/U12 snRNPs, which are components of U12-type spliceosome and function as a molecular bridge connecting both ends of the intron, suggesting ZCRB1 may play a key role in U12-type splicing.

Note: This product is for in vitro research use only