

PALB2 Antibody

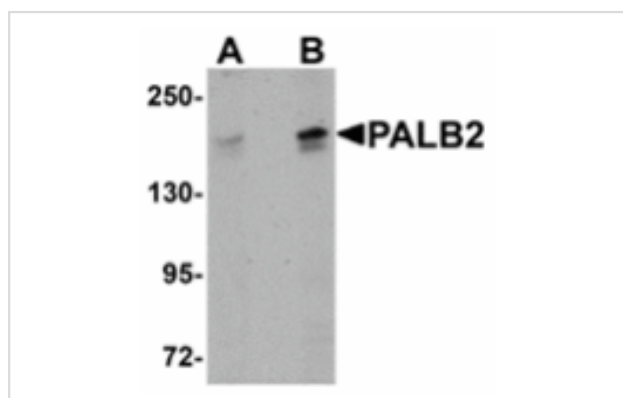
Catalog No: #24938

Orders: order@signalwayantibody.comSupport: tech@signalwayantibody.com

Description

Product Name	PALB2 Antibody
Host Species	Rabbit
Clonality	Polyclonal
Purification	Affinity chromatography purified via peptide column
Applications	ELISA WB
Species Reactivity	Hu Ms Rt
Immunogen Type	Peptide
Immunogen Description	Raised against a 15 amino acid peptide from near the carboxy terminus of human PALB2.
Target Name	PALB2
Other Names	Partner and localizer of BRCA2, FANCN
Accession No.	Q86YC2
Uniprot	Q86YC2
GeneID	79728;
Concentration	1mg/ml
Formulation	Supplied in PBS containing 0.02% sodium azide.
Storage	Can be stored at -20°C, stable for one year. As with all antibodies care should be taken to avoid repeated freeze thaw cycles. Antibodies should not be exposed to prolonged high temperatures.

Images



Western blot analysis of PALB2 in SK-N-SH cell lysate with PALB2 antibody at (A) 1 and (B) 2 ug/mL.

Background

The breast cancer early onset proteins BRCA1 and BRCA2 are central to the repair of DNA damage by homologous recombination and are strongly associated with inherited breast and ovarian cancer. The protein PALB2 is required for the localization of BRCA2 to sites of DNA damage and like BRCA1 and 2 is a breast cancer susceptibility gene. PALB2 is thought to function through directly binding to BRCA1, which allows the PALB2 protein to organize BRCA2 and the recombinase RAD51 at the site of DNA damage. Analysis of the BRCA1-PALB2-BRCA2-RAD51 network may allow predictions to be made of the responsiveness of a particular tumor to therapeutic treatments. At least four isoforms of PALB2 are known to exist.

Note: This product is for in vitro research use only