

JMJD2B Antibody

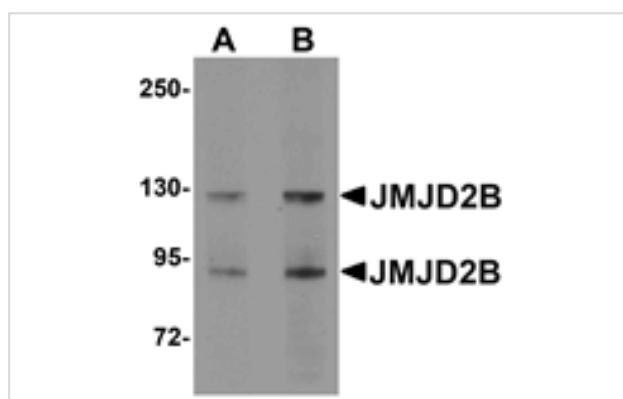
Catalog No: #24959

Orders: order@signalwayantibody.comSupport: tech@signalwayantibody.com

Description

Product Name	JMJD2B Antibody
Host Species	Rabbit
Clonality	Polyclonal
Purification	Affinity chromatography purified via peptide column
Applications	ELISA WB
Species Reactivity	Hu Ms Rt
Immunogen Type	Peptide
Immunogen Description	Raised against a 16 amino acid peptide from near the center of human JMJD2B.
Target Name	JMJD2B
Other Names	Jumonji domain-containing protein 2B, Lysine-specific demethylase 4B, KDM4B
Accession No.	AAI36612
Concentration	1mg/ml
Formulation	Supplied in PBS containing 0.02% sodium azide.
Storage	Can be stored at -20°C, stable for one year. As with all antibodies care should be taken to avoid repeated freeze thaw cycles. Antibodies should not be exposed to prolonged high temperatures.

Images



Western blot analysis of JMJD2B in A20 cell lysate with JMJD2B antibody at (A) 1 and (B) 2 ug/mL.

Background

Members of the Jumonji domain 2 (JMJD2) family contain a JmjN domain, a JmjC domain, a JD2H domain, two TUDOR domains, and two PHD-type zinc fingers. Like other members of the JMJD1 and JMJD2 families, JMJD2B is a histone demethylase, but is reported to be a very poor enzyme. Similar to JMJD1A, JMJD2B is a transcriptional target of the hypoxia-inducible factor (HIF), and hypoxic cells express elevated levels of the JMJD2B mRNA and protein. Both JMJD1A and JMJD2B retain their histone demethylase activity in hypoxic conditions, suggesting that this activity of JMJD2B might play a role in the hypoxic gene expression program.

Note: This product is for in vitro research use only