

Prosapip1 Antibody

Catalog No: #24968

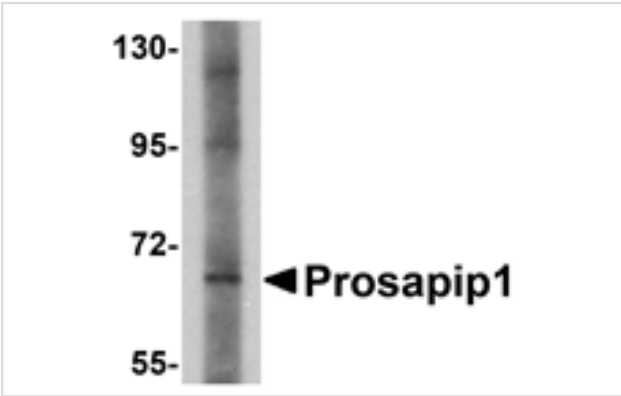


Orders: order@signalwayantibody.com
Support: tech@signalwayantibody.com

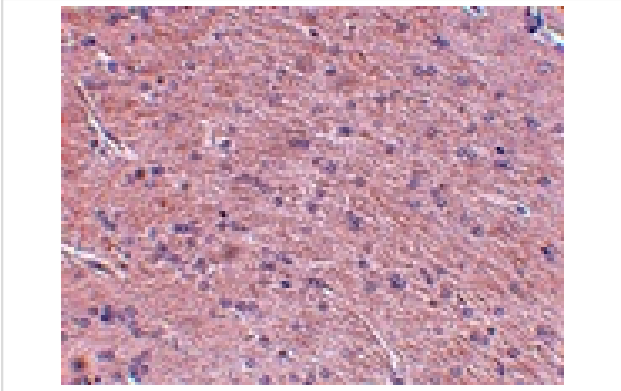
Description

Product Name	Prosapip1 Antibody
Host Species	Rabbit
Clonality	Polyclonal
Purification	Affinity chromatography purified via peptide column
Applications	ELISA WB IHC
Species Reactivity	Hu Ms Rt
Immunogen Type	Peptide
Immunogen Description	Raised against a 16 amino acid peptide from near the carboxy terminus of human Prosapip1.
Target Name	Prosapip1
Other Names	Proline-rich synapse-associated protein-interacting protein 1
Accession No.	Swiss-Prot:O60299Gene ID:9762
Uniprot	O60299
GeneID	9762;
Concentration	1mg/ml
Formulation	Supplied in PBS containing 0.02% sodium azide.
Storage	Can be stored at -20°C, stable for one year. As with all antibodies care should be taken to avoid repeated freeze thaw cycles. Antibodies should not be exposed to prolonged high temperatures.

Images



Western blot analysis of Prosapip1 in SK-N-SH cell lysate with Prosapip1 antibody at 1 ug/mL.



Immunohistochemistry of Prosapip1 in rat brain tissue with Prosapip1 antibody at 2.5 ug/mL.

Background

Prosapip1 is a binding partner of the postsynaptic density (PSD) protein ProSAP2/Shank3, a major scaffolding protein in excitatory brain synapses. Prosapip1 is thought to bind ProSAP2/Shank3 through ProSAP2/Shank3's PDZ domain and link it in turn to the Spine-associated Rap-Gap (SPAR). Prosapip1 shares significant homology with another PSD protein, PSD-Zip70, with both coding for a Fez1 domain that can be found in a total of four related proteins, forming a novel family of scaffolding molecules termed β -Fezzins. Recent studies show that Prosapip1 can be found in endocrine cells in which it is localized primarily in the hormone-storing compartment of these cells, suggesting that Prosapip1 may have other functions in non-neuronal cells.

Note: This product is for in vitro research use only