

## RUSC2 Antibody

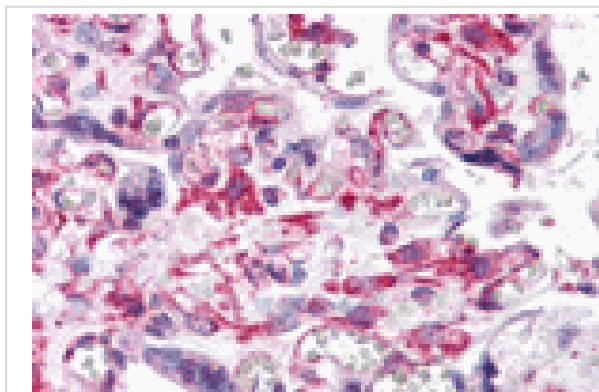
Catalog No: #24976

Orders: [order@signalwayantibody.com](mailto:order@signalwayantibody.com)Support: [tech@signalwayantibody.com](mailto:tech@signalwayantibody.com)

## Description

Product Name	RUSC2 Antibody
Host Species	Rabbit
Clonality	Polyclonal
Purification	Affinity chromatography purified via peptide column
Applications	ELISA IHC
Species Reactivity	Hu
Specificity	At least three isoforms are known to exist; this antibody will only detect the longest isoform. This antibody is predicted to not cross-react with RUSC1.
Immunogen Type	Peptide
Immunogen Description	Raised against a 15 amino acid peptide from near the carboxy terminus of human RUSC2.
Target Name	RUSC2
Other Names	RUN and SH3 domain containing protein 2, Iporin
Accession No.	Swiss-Prot:Q8N2Y8Gene ID:9853
Uniprot	Q8N2Y8
GeneID	9853;
Concentration	1mg/ml
Formulation	Supplied in PBS containing 0.02% sodium azide.
Storage	Can be stored at -20°C, stable for one year. As with all antibodies care should be taken to avoid repeated freeze thaw cycles. Antibodies should not be exposed to prolonged high temperatures.

## Images



Immunohistochemistry of RUSC2 in human placenta tissue with RUSC2 antibody at 5 ug/mL.

## Background

RUSC2, also known as Iporin, shares with the related protein RUSC1 a common domain structure of RUN, leucine zipper and SH3 domain in addition to over 30% amino acid identity. RUSC2 is a rab1-interacting protein that also interacts with GM130, another rab1-interacting protein. RUSC2 interacts with specific rab1 isoforms with different rab-binding specificity. It has been suggested that RUSC2 may function as a link between the targeting of ER derived vesicles triggered by the rab1 GTPase and a signaling pathway composed of proteins containing SH3 and/or poly-proline regions.

---

Note: This product is for in vitro research use only