

## CKIP1 Antibody

Catalog No: #24982

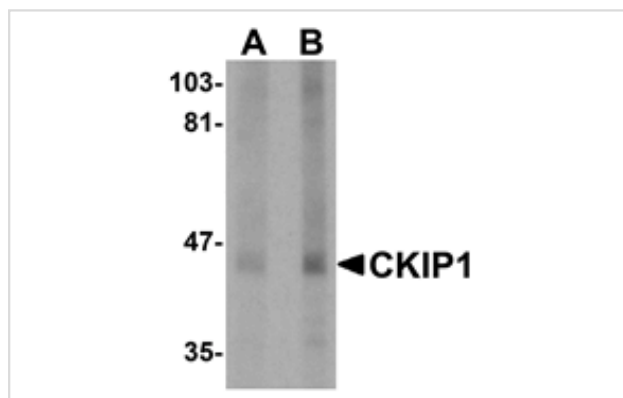
Orders: order@signalwayantibody.com

Support: tech@signalwayantibody.com

## Description

Product Name	CKIP1 Antibody
Host Species	Rabbit
Clonality	Polyclonal
Purification	Affinity chromatography purified via peptide column
Applications	ELISA WB
Species Reactivity	Hu Ms Rt
Immunogen Type	Peptide
Immunogen Description	Raised against an 18 amino acid peptide from near the carboxy terminus of human CKIP1.
Target Name	CKIP1
Other Names	Casein kinase-2-interacting protein 1, pleckstrin homology domain containing, family O member 1, PLECKHO1
Accession No.	Swiss-Prot:Q53GL0Gene ID:51177
Uniprot	Q53GL0
GeneID	51177;
Concentration	1mg/ml
Formulation	Supplied in PBS containing 0.02% sodium azide.
Storage	Can be stored at -20°C, stable for one year. As with all antibodies care should be taken to avoid repeated freeze thaw cycles. Antibodies should not be exposed to prolonged high temperatures.

## Images



Western blot analysis of CKIP1 in human lung tissue lysate with CKIP1 antibody at (A) 1 and (B) 2 ug/mL.

## Background

CKIP1 was identified through a yeast-two hybrid screening as a protein that would interact with only one of the two catalytic subunits of the casein kinase 2 complex. CKIP1 is a pleckstrin homology domain-containing protein localized within the nucleus and at the plasma membrane that interacts with CK2alpha but not CK2alpha $\Omega$ ? and is thought to play a role in targeting CK2alpha to a particular cellular location. CKIP1 has been implicated in muscle differentiation and the regulation of cell morphology and actin cytoskeleton. CKIP1 can also interact with other proteins such as ATM, an upstream kinase of p53, and recruit the nuclear ATM to the plasma membrane, suggesting CKIP1 may regulate ATM function through re-localizing ATM. CKIP1 can also form a complex with the kinase AKT, leading to a down-regulation of PI3K/AKT signaling and suppression of tumor growth in vivo.

---

Note: This product is for in vitro research use only