

SLAIN1 Antibody

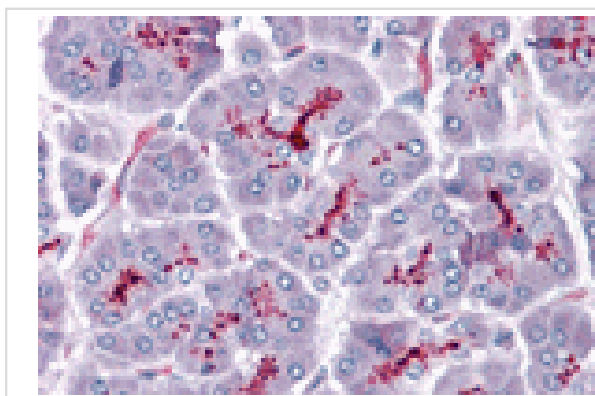
Catalog No: #24998

Orders: order@signalwayantibody.comSupport: tech@signalwayantibody.com

Description

Product Name	SLAIN1 Antibody
Host Species	Rabbit
Clonality	Polyclonal
Purification	Affinity chromatography purified via peptide column
Applications	ELISA IHC
Species Reactivity	Hu
Specificity	At least three isoforms of SLAIN1 are known to exist; this antibody will detect only the largest isoform. SLAIN1 antibody is predicted not to cross-react with SLAIN2.
Immunogen Type	Peptide
Immunogen Description	Raised against a 16 amino acid peptide near the center of human SLAIN1.
Target Name	SLAIN1
Other Names	Slain motif family 1, c13orf32
Accession No.	Swiss-Prot:Q8ND83Gene ID:122060
Uniprot	Q8ND83
GeneID	122060;
Concentration	1mg/ml
Formulation	Supplied in PBS containing 0.02% sodium azide.
Storage	Can be stored at -20°C, stable for one year. As with all antibodies care should be taken to avoid repeated freeze thaw cycles. Antibodies should not be exposed to prolonged high temperatures.

Images



Immunohistochemistry of SLAIN1 in human pancreas with SLAIN1 antibody at 5 ug/mL.

Background

SLAIN1 is a novel stem cell protein that was identified by transcriptional profiling of mouse and human embryonic stem cells (ESCs) and is expressed at the stem cell and epiblast stages. Unlike its more widely expressed homolog SLAIN2, SLAIN1 was found to be expressed in the epiblast, nervous system, tailbud and somites of the developing mouse embryo later experiments suggested that SLAIN1 may play a role in the development of the nervous system as well as in the morphogenesis of several embryonic structures.

Note: This product is for in vitro research use only