

SIPA1L2 Antibody

Catalog No: #25007

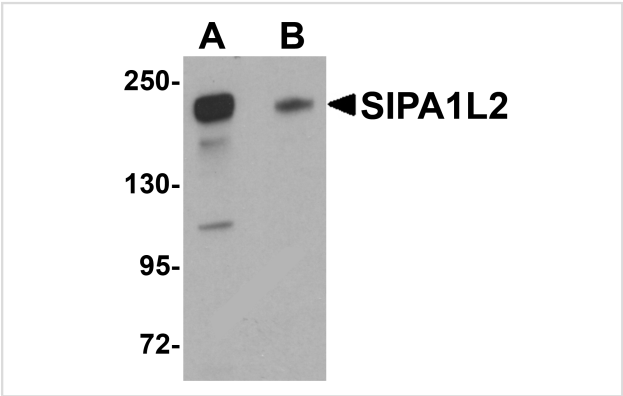


Orders: order@signalwayantibody.com
Support: tech@signalwayantibody.com

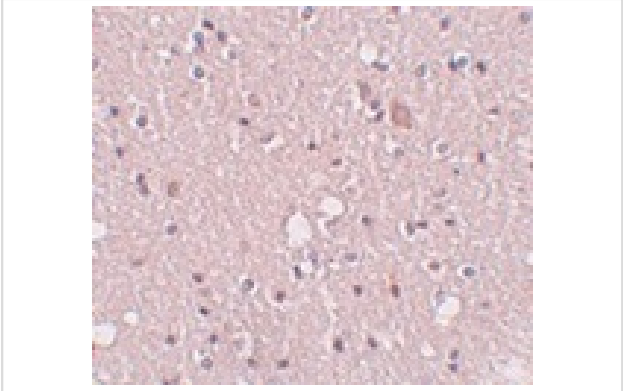
Description

Product Name	SIPA1L2 Antibody
Host Species	Rabbit
Clonality	Polyclonal
Purification	Affinity chromatography purified via peptide column
Applications	ELISA WB IHC
Species Reactivity	Hu Ms Rt
Immunogen Type	Peptide
Immunogen Description	Raised against a 19 amino acid peptide from near the amino terminus of human SIPA1L2.
Target Name	SIPA1L2
Other Names	Signal-induced proliferation associated-like protein 2, SPAL2
Accession No.	Swiss-Prot:Q9P2F8Gene ID:57568
Uniprot	Q9P2F8
GeneID	57568;
Concentration	1mg/ml
Formulation	Supplied in PBS containing 0.02% sodium azide.
Storage	Can be stored at -20°C, stable for one year. As with all antibodies care should be taken to avoid repeated freeze thaw cycles. Antibodies should not be exposed to prolonged high temperatures.

Images



Western blot analysis of SIPA1L2 in rat brain tissue lysate with SIPA1L2 antibody at 1 ug/mL in (A) the absence and (B) the presence of blocking peptide.



Immunohistochemistry of SIPA1L2 in human brain tissue with SIPA1L2 antibody at 5 ug/mL.

Background

Signal-induced proliferation associated-like protein 2 (SIPA1L2) is a member of the SIPA1 family of RapGAPs. Little is known of the role of the SIPA1L2 protein, but recent studies of SIPA indicate that its deregulation can cause myeloproliferative stem cell disorders in mice and increased metastases in human cancers. Other studies suggest SIPA1L1 may play important roles in embryo development and control of cell proliferation. Based on the amount of homology between SIPA family members, it is likely that SIPA1L2 plays a role in embryo development and cell proliferation, possibly including oncogenesis.

Note: This product is for in vitro research use only