

# SIPA1L3 Antibody

Catalog No: #25008

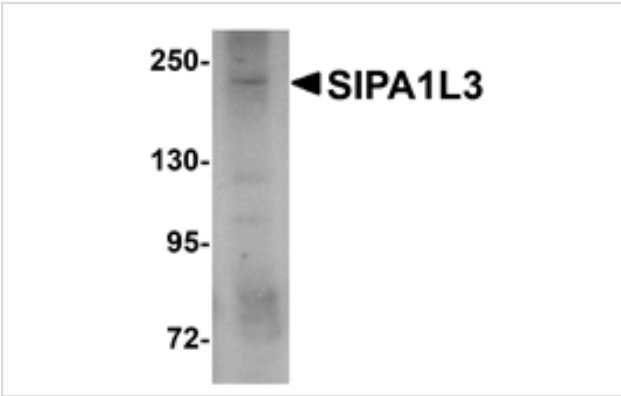


Orders: [order@signalwayantibody.com](mailto:order@signalwayantibody.com)  
Support: [tech@signalwayantibody.com](mailto:tech@signalwayantibody.com)

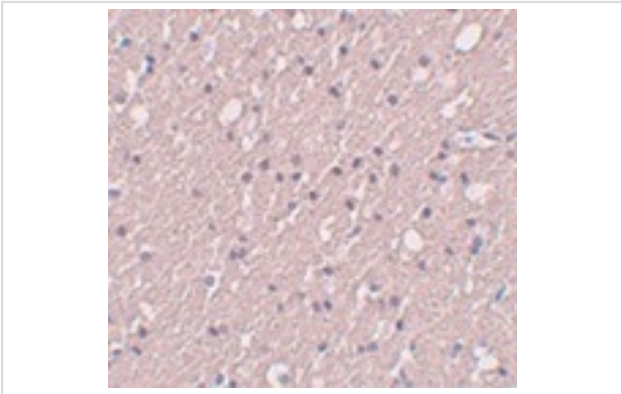
## Description

Product Name	SIPA1L3 Antibody
Host Species	Rabbit
Clonality	Polyclonal
Purification	Affinity chromatography purified via peptide column
Applications	ELISA WB IHC
Species Reactivity	Hu Ms Rt
Immunogen Type	Peptide
Immunogen Description	Raised against a 15 amino acid peptide from near the amino terminus of human SIPA1L3.
Target Name	SIPA1L3
Other Names	Signal-induced proliferation associated-like protein 3, SPAL3
Accession No.	Swiss-Prot:O60292Gene ID:23094
Uniprot	O60292
GeneID	23094;
Concentration	1mg/ml
Formulation	Supplied in PBS containing 0.02% sodium azide.
Storage	Can be stored at -20°C, stable for one year. As with all antibodies care should be taken to avoid repeated freeze thaw cycles. Antibodies should not be exposed to prolonged high temperatures.

## Images



Western blot analysis of SIPA1L3 in SK-N-SH lysate with SIPA1L3 antibody at 1 ug/mL.



Immunohistochemistry of SIPA1L3 in human brain tissue with SIPA1L3 antibody at 5 ug/mL.

## Background

Signal-induced proliferation associated-like protein 2 (SIPA1L3) is a member of the SIPA1 family of RapGAPs. SIPA1L3 was cloned as a novel molecular component of tight junctions and adherens junctions, suggesting that may function to balance Rap1 by counteracting RapGEFs. Recent studies of SIPA indicate that its deregulation can cause myeloproliferative stem cell disorders in mice and increased metastases in human cancers. Other studies suggest SIPA1L1 may play important roles in embryo development and control of cell proliferation. Based on the amount of homology between SIPA family members, it is possible that SIPA1L3 plays other roles development and cell proliferation.

Note: This product is for in vitro research use only