

MARVELD1 Antibody

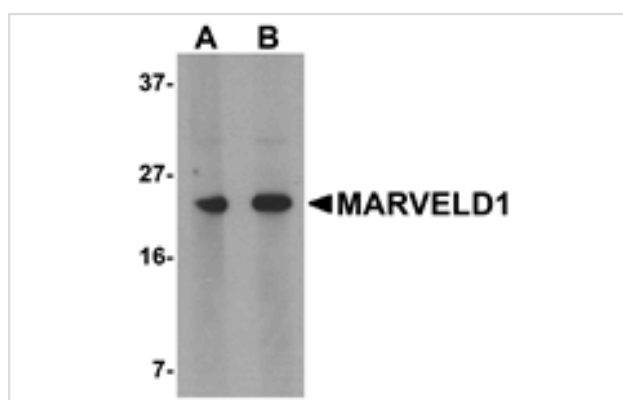
Catalog No: #25010

Orders: order@signalwayantibody.comSupport: tech@signalwayantibody.com

Description

Product Name	MARVELD1 Antibody
Host Species	Rabbit
Clonality	Polyclonal
Purification	Affinity chromatography purified via peptide column
Applications	ELISA WB
Species Reactivity	Hu Ms Rt
Immunogen Type	Peptide
Immunogen Description	Raised against a 16 amino acid peptide from near the amino terminus of human MARVELD1.
Target Name	MARVELD1
Other Names	MARVEL domain-containing 1, MARVD1, MRVLDC1, GB14
Accession No.	Swiss-Prot:Q9BSK0Gene ID:83742
Uniprot	Q9BSK0
GenelD	83742;
Concentration	1mg/ml
Formulation	Supplied in PBS containing 0.02% sodium azide.
Storage	Can be stored at -20°C, stable for one year. As with all antibodies care should be taken to avoid repeated freeze thaw cycles. Antibodies should not be exposed to prolonged high temperatures.

Images



Western blot analysis of MARVELD1 in mouse heart tissue lysate with MARVELD1 antibody at (A) 1 and (B) 2 ug/mL.

Background

MARVELD1, (MARVEL domain-containing 1), is one of the MARVEL (MAL and related proteins for vesicle trafficking and membrane link) domain-containing proteins. It is a nuclear-localized protein that is widely expressed in normal human tissues. While it has been reported to be overexpressed in colon cancer, MARVELD1 protein levels are generally lower in several primary tumors including ovary, breast, kidney, bladder and liver. This lower level of MARVELD1 expression in tumors is thought to be due to a higher methylation status of the MARVELD1 promoter as treatment of MDA-MB-361 with 5-aza-2'-deoxycytidine restores MARVELD1 expression, suggesting that loss of MARVELD1 expression may contribute to tumorigenicity.

Note: This product is for in vitro research use only