

CCDC47 Antibody

Catalog No: #25012

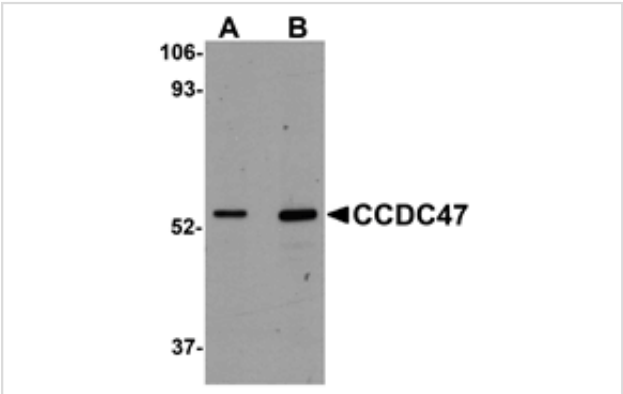


Orders: order@signalwayantibody.com
Support: tech@signalwayantibody.com

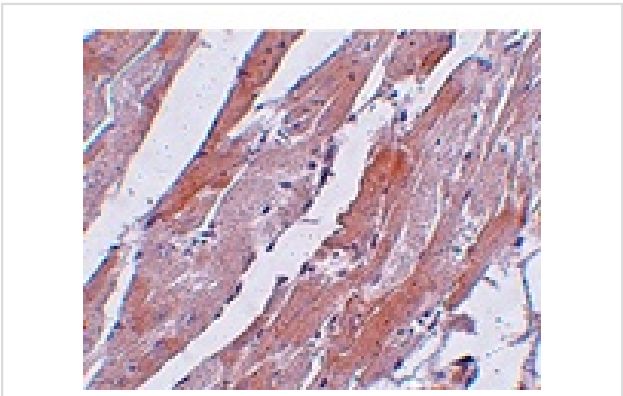
Description

Product Name	CCDC47 Antibody
Host Species	Rabbit
Clonality	Polyclonal
Purification	Affinity chromatography purified via peptide column
Applications	ELISA WB IHC
Species Reactivity	Hu Ms Rt
Immunogen Type	Peptide
Immunogen Description	Raised against a 15 amino acid peptide from near the carboxy terminus of human CCDC47.
Target Name	CCDC47
Other Names	Coiled-coil domain containing 47, MSTP041, GK001
Accession No.	Swiss-Prot:Q96A33Gene ID:57003
Uniprot	Q96A33
GenelD	57003;
Concentration	1mg/ml
Formulation	Supplied in PBS containing 0.02% sodium azide.
Storage	Can be stored at -20°C, stable for one year. As with all antibodies care should be taken to avoid repeated freeze thaw cycles. Antibodies should not be exposed to prolonged high temperatures.

Images



Western blot analysis of CCDC47 in mouse heart tissue lysate with CCDC47 antibody at (A) 1 and (B) 2 ug/mL.



Immunohistochemistry of CCDC47 in mouse heart tissue with CCDC47 antibody at 5 ug/mL.

Background

The coiled-coil domain is a common protein motif that is often involved in protein oligomerization and is found in proteins such as transcription factors and intermediate filaments. The CCDC47 gene maps to chromosome 17 at 17q23.3. Little is known about this single-pass membrane protein except that the coiled-coil domain is within the cytosolic domain near the carboxy terminus.

Note: This product is for in vitro research use only