

RHBDD3 Antibody

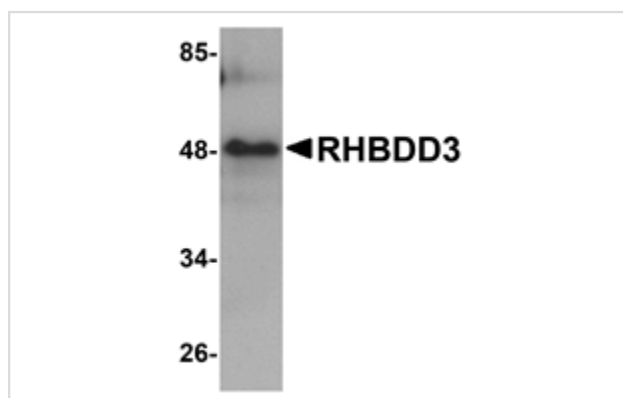
Catalog No: #25022

Orders: order@signalwayantibody.comSupport: tech@signalwayantibody.com

Description

Product Name	RHBDD3 Antibody
Host Species	Rabbit
Clonality	Polyclonal
Purification	Affinity chromatography purified via peptide column
Applications	ELISA WB
Species Reactivity	Hu Ms Rt
Immunogen Type	Peptide
Immunogen Description	Raised against a 13 amino acid peptide from near the center of human RHBDD3.
Target Name	RHBDD3
Other Names	Rhomboid domain containing 3, pituitary tumor apoptosis gene, PTAG
Accession No.	Swiss-Prot:Q9Y3P4Gene ID:25807
Uniprot	Q9Y3P4
GeneID	25807;
Concentration	1mg/ml
Formulation	Supplied in PBS containing 0.02% sodium azide.
Storage	Can be stored at -20°C, stable for one year. As with all antibodies care should be taken to avoid repeated freeze thaw cycles. Antibodies should not be exposed to prolonged high temperatures.

Images



Western blot analysis of RHBDD3 in rat lung tissue lysate with RHBDD3 antibody at 1 ug/mL.

Background

The Rhomboid family of proteins is made up of several widely conserved polytopic membrane serine proteases that play roles in growth and development. RHBDD3 was initially identified as a novel pituitary tumor apoptosis gene (PTAG) whose expression was reduced in certain pituitary adenomas. Overexpression of RHBDD3 in AtT20 cells showed an increase in apoptotic activity and caspase activation in response to bromocriptine, and apoptosis-inducing dopamine D2 analog, suggesting that reactivation of RHBDD3 in tumors may be a therapeutically useful tool. Later experiments also showed that RHBDD3 expression is also reduced in several primary colorectal tumors, indicating that loss of RHBDD3 contributes to a blunted apoptotic response and probably predisposes cells towards malignant transformation.

Note: This product is for in vitro research use only