

INCA1 Antibody

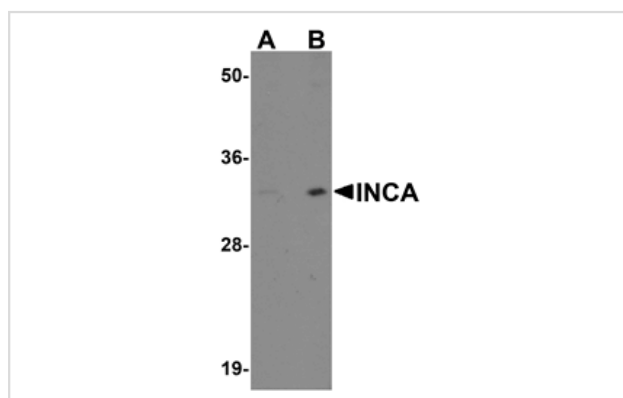
Catalog No: #25023

Orders: order@signalwayantibody.comSupport: tech@signalwayantibody.com

Description

Product Name	INCA1 Antibody
Host Species	Rabbit
Clonality	Polyclonal
Purification	Affinity chromatography purified via peptide column
Applications	ELISA WB
Species Reactivity	Hu Ms Rt
Immunogen Type	Peptide
Immunogen Description	Raised against a 15 amino acid peptide from near the carboxy terminus of human INCA1.
Target Name	INCA1
Other Names	Inhibitor of CDK1 interacting with cyclin A1, HSD45
Accession No.	Swiss-Prot:Q96EL1Gene ID:389119
Uniprot	Q96EL1
GeneID	389119;
Concentration	1mg/ml
Formulation	Supplied in PBS containing 0.02% sodium azide.
Storage	Can be stored at -20°C, stable for one year. As with all antibodies care should be taken to avoid repeated freeze thaw cycles. Antibodies should not be exposed to prolonged high temperatures.

Images



Western blot analysis of INCA1 in EL4 cell lysate with INCA1 antibody at (A) 1 and (B) 2 ug/mL.

Background

INCA1 was isolated through a yeast triple hybrid approach to identify interaction partners of the cyclin A1-CDK2 heterodimer. INCA1 is evolutionarily conserved and has no homology to any known proteins. Like Cyclin A1, INCA1 is highly expressed in testis with highest levels observed at various points of testis maturation. It has been suggested that the complex of INCA1 and the cyclinA1-CDK2 dimer plays a role in several signaling pathways important for cell cycle control and meiosis. Recent experiments have shown that INCA1 also interacts with the testis protein RSB-66 and this interaction takes place in the cytoplasm.

Note: This product is for in vitro research use only