

Girdin Antibody

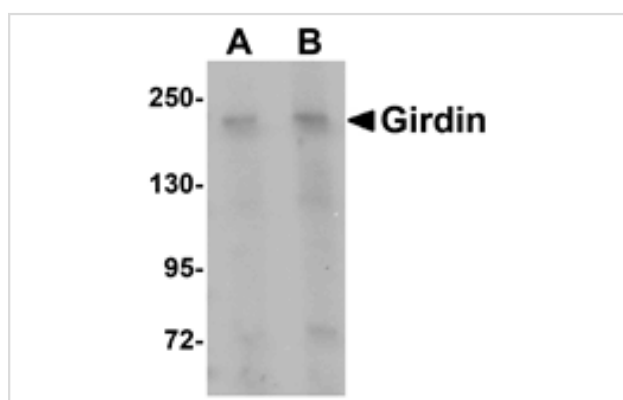
Catalog No: #25026

Orders: order@signalwayantibody.comSupport: tech@signalwayantibody.com

Description

Product Name	Girdin Antibody
Host Species	Rabbit
Clonality	Polyclonal
Purification	Affinity chromatography purified via peptide column
Applications	ELISA WB
Species Reactivity	Hu Ms Rt
Immunogen Type	Peptide
Immunogen Description	Raised against a 16 amino acid peptide from near the carboxy terminus human Girdin.
Target Name	Girdin
Other Names	Coiled-coil domain-containing 88A, CCDC88A, GRDN, APE, GIV, HkRP1
Accession No.	Swiss-Prot:Q3V6T2Gene ID:55704
Uniprot	Q3V6T2
GeneID	55704;
Concentration	1mg/ml
Formulation	Supplied in PBS containing 0.02% sodium azide.
Storage	Can be stored at -20°C, stable for one year. As with all antibodies care should be taken to avoid repeated freeze thaw cycles. Antibodies should not be exposed to prolonged high temperatures.

Images



Western blot analysis of Girdin in rat brain tissue lysate with Girdin antibody at (A) 1 and (B) 2 ug/mL.

Background

Girdin is a Galpha-interacting protein that can enhance the activation of the protein kinase Akt, remodel the actin cytoskeleton, and is thought to be involved in the regulation of cell migration and cancer metastasis. It has recently been shown that Girdin interacts with Disrupted-in-Schizophrenia 1 (DISC1), a susceptibility gene for major psychiatric disorders. DISC1 is thought to be involved in the migration, positioning and differentiation of dentate granule cells (DGCs) during development; depletion of Girdin or blocking the Girdin-DISC1 interaction results in defects in axonal sprouting in the CA3 region of the hippocampus and overextended migration of mispositioning of DGCs, suggesting the Girdin plays a role in postnatal neurogenesis in the dentate gyrus.

Note: This product is for in vitro research use only