

# RSRC1 Antibody

Catalog No: #25056

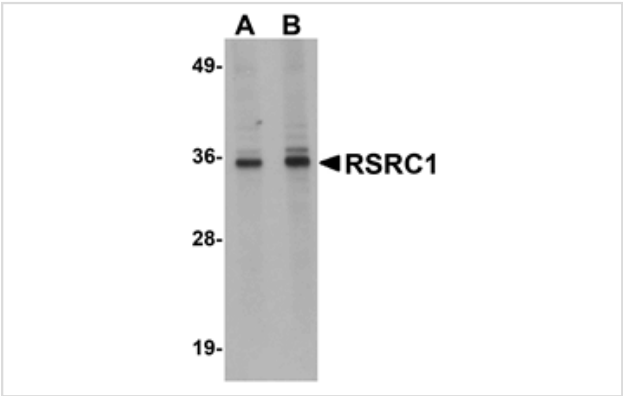


Orders: [order@signalwayantibody.com](mailto:order@signalwayantibody.com)  
Support: [tech@signalwayantibody.com](mailto:tech@signalwayantibody.com)

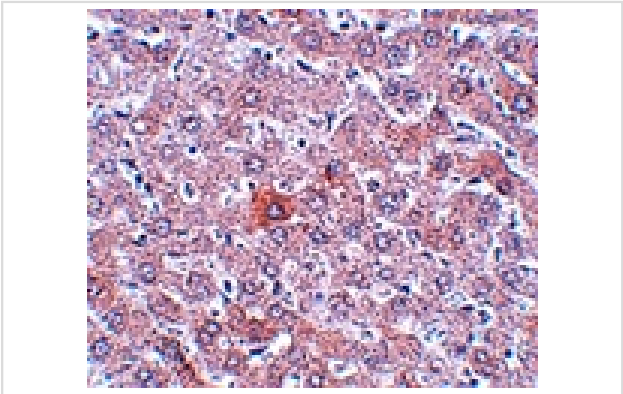
## Description

Product Name	RSRC1 Antibody
Host Species	Rabbit
Clonality	Polyclonal
Purification	Affinity chromatography purified via peptide column
Applications	ELISA WB IHC
Species Reactivity	Hu Ms Rt
Immunogen Type	Peptide
Immunogen Description	Raised against a 19 amino acid peptide near the carboxy terminus of human RSRC1.
Target Name	RSRC1
Other Names	Arginine, serine-rich coiled-coil 1, SFRS21, SRp53, BM-011
Accession No.	Swiss-Prot:Q96IZ7Gene ID:51319
Uniprot	Q96IZ7
GeneID	51319;
Concentration	1mg/ml
Formulation	Supplied in PBS containing 0.02% sodium azide.
Storage	Can be stored at -20°C, stable for one year. As with all antibodies care should be taken to avoid repeated freeze thaw cycles. Antibodies should not be exposed to prolonged high temperatures.

## Images



Western blot analysis of RSRC1 in HepG2 cell lysate with RSRC1 antibody at (A) 1 and (B) 2 ug/mL.



Immunohistochemistry of RSRC1 in rat liver tissue with RSRC1 antibody at 5 ug/mL.

## Background

---

The arginine/serine-rich coiled-coil 1 protein (RSRC1) was initially identified as a non-snRNP splicing factor that has a role in both the constitutive and alternative splicing of pre-mRNA molecules. In cellular nuclear extracts immunodepleted of RSRC1, the second step of pre-mRNA splicing is blocked; recombinant RSRC1 is able to restore splicing activity. RSRC1 has also been reported to be associated with schizophrenia as well as a unique marker of bone marrow-derived stem cells that also express the cdc34 marker.

---

Note: This product is for in vitro research use only