

## Nephrin Antibody

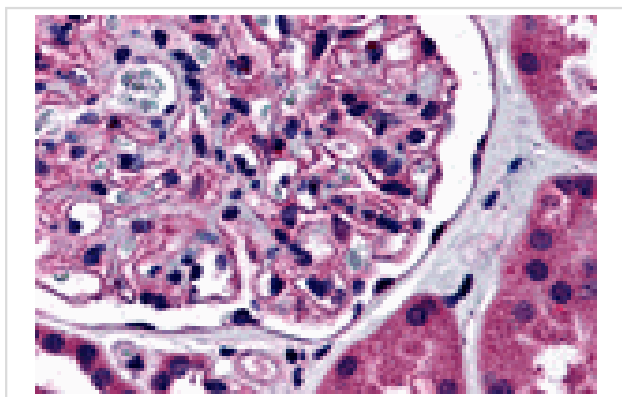
Catalog No: #25059

Orders: [order@signalwayantibody.com](mailto:order@signalwayantibody.com)Support: [tech@signalwayantibody.com](mailto:tech@signalwayantibody.com)

## Description

Product Name	Nephrin Antibody
Host Species	Rabbit
Clonality	Polyclonal
Purification	Affinity chromatography purified via peptide column
Applications	ELISA IHC
Species Reactivity	Hu
Immunogen Type	Peptide
Immunogen Description	Raised against a 16 amino acid peptide from near the center of human Nephrin.
Target Name	Nephrin
Other Names	NPHN, NPHS1, Renal glomerulus-specific cell adhesion receptor
Accession No.	Swiss-Prot:O60500Gene ID:4868
Uniprot	O60500
GeneID	4868;
Concentration	1mg/ml
Formulation	Supplied in PBS containing 0.02% sodium azide.
Storage	Can be stored at -20°C, stable for one year. As with all antibodies care should be taken to avoid repeated freeze thaw cycles. Antibodies should not be exposed to prolonged high temperatures.

## Images



Immunohistochemistry of Nephrin in human kidney tissue with Nephrin antibody at 5 ug/mL.

## Background

Nephrin is strongly expressed in renal glomeruli and is a member of the immunoglobulin family of cell adhesion molecules. Mutations in the Nephrin gene result in congenital nephrotic syndrome, an autosomal-recessive disorder characterized by massive proteinuria in utero and nephrosis at birth. Renal glomeruli allow normal kidneys to filter plasma so that it is very pure. Nephrin is expressed in the podocyte slit-diaphragm of the renal glomeruli in a manner that suggests that Nephrin molecules homodimerize in an anti-parallel fashion similar to cadherin interactions in adherens junctions. Thus, Nephrin may constitute the entire extracellular structure of the slit-diaphragm.

---

Note: This product is for in vitro research use only