

MINA Antibody

Catalog No: #25060

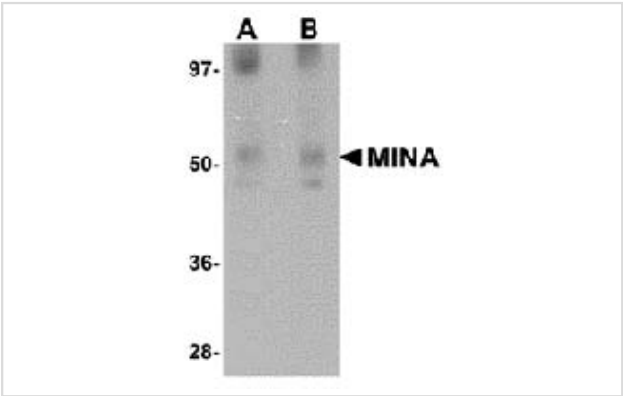


Orders: order@signalwayantibody.com
Support: tech@signalwayantibody.com

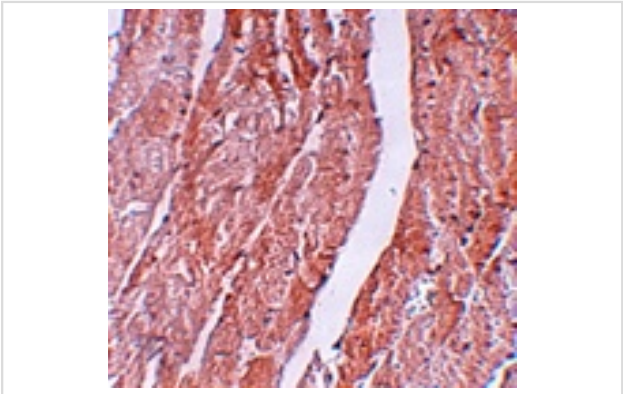
Description

Product Name	MINA Antibody
Host Species	Rabbit
Clonality	Polyclonal
Purification	Affinity chromatography purified via peptide column
Applications	ELISA WB IHC
Species Reactivity	Hu Ms
Immunogen Type	Peptide
Immunogen Description	Raised against a 15 amino acid peptide near the amino terminus of human MINA.
Target Name	MINA
Other Names	Myc induced nuclear antigen, MINA53, MDIG, NO52
Accession No.	Swiss-Prot:Q8IUF8Gene ID:84864
Uniprot	Q8IUF8
GeneID	84864;
Concentration	1mg/ml
Formulation	Supplied in PBS containing 0.02% sodium azide.
Storage	Can be stored at -20°C, stable for one year. As with all antibodies care should be taken to avoid repeated freeze thaw cycles. Antibodies should not be exposed to prolonged high temperatures.

Images



Western blot analysis of MINA in human heart tissue lysate with MINA antibody at (A) 1 and (B) 2 ug/mL.



Immunohistochemistry of MINA in mouse heart tissue with MINA antibody at 5 ug/mL.

Background

MINA is nuclear localized, myc-inducible protein that is thought to play a role in mammalian cell proliferation. Treatment of cancer cells lines such as the colon cancer cell line SW680 with siRNA against MINA inhibits cell growth, demonstrating that MINA may be a potential therapeutic target. MINA regulates several genes related to cell adhesion and metabolism that have also been shown to be regulated by c-Myc, but also regulates other genes whose expression are not modulated by c-Myc such as EGFR, IL-6 and HGF. MINA has also been found to act as a repressor to IL-4 expression in T cells, indicating that it may also play a role in T cell differentiation and genetic variation in T helper type 2 bias.

Note: This product is for in vitro research use only