

LZTR1 Antibody

Catalog No: #25061

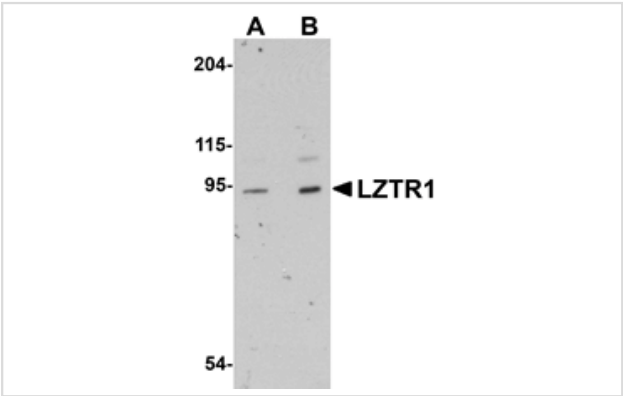


Orders: order@signalwayantibody.com
Support: tech@signalwayantibody.com

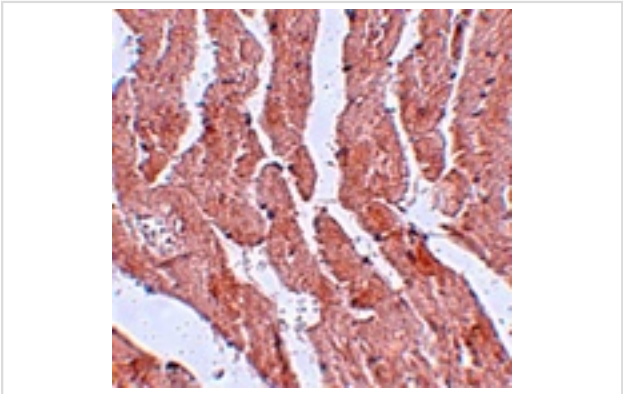
Description

Product Name	LZTR1 Antibody
Host Species	Rabbit
Clonality	Polyclonal
Purification	Affinity chromatography purified via peptide column
Applications	ELISA WB IHC
Species Reactivity	Hu Ms Rt
Immunogen Type	Peptide
Immunogen Description	Raised against a 14 amino acid peptide near the amino terminus of human LZTR1.
Target Name	LZTR1
Other Names	Leucine zipper-like transcription regulator 1
Accession No.	Swiss-Prot:Q8N653Gene ID:8216
Uniprot	Q8N653
GeneID	8216;
Concentration	1mg/ml
Formulation	Supplied in PBS containing 0.02% sodium azide.
Storage	Can be stored at -20°C, stable for one year. As with all antibodies care should be taken to avoid repeated freeze thaw cycles. Antibodies should not be exposed to prolonged high temperatures.

Images



Western blot analysis of LZTR1 in human heart tissue lysate with LZTR1 antibody at (A) 1 and (B) 2 ug/mL.



Immunohistochemistry of LZTR1 in mouse heart tissue with LZTR1 antibody at 5 ug/mL.

Background

LZTR1, a member of the BTB-kelch superfamily, was initially described as a putative transcriptional regulator based on weak homology to members of the basic leucine zipper-like family, the encoded protein subsequently has been shown to localize exclusively to the Golgi network where it may help stabilize the Golgi complex. Deletion of this gene may be associated with DiGeorge syndrome, a developmental field defect involving the third and fourth pharyngeal pouches, causing the absence of thymus and parathyroid glands, congenital cardiac abnormalities and facial dysmorphism. LZTR1 is tyrosine phosphorylated and subsequently degraded upon induction of apoptosis.

Note: This product is for in vitro research use only