

LZTR2 Antibody

Catalog No: #25062

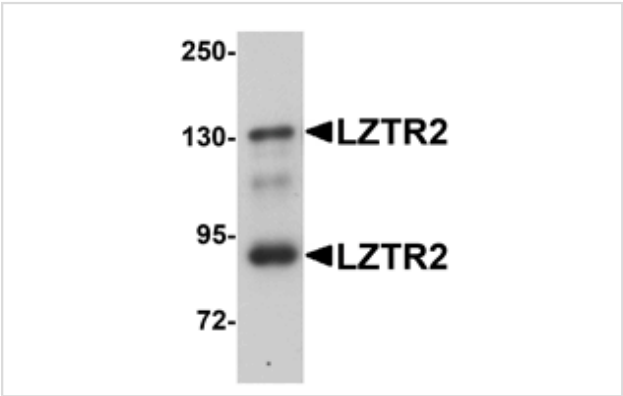


Orders: order@signalwayantibody.com
Support: tech@signalwayantibody.com

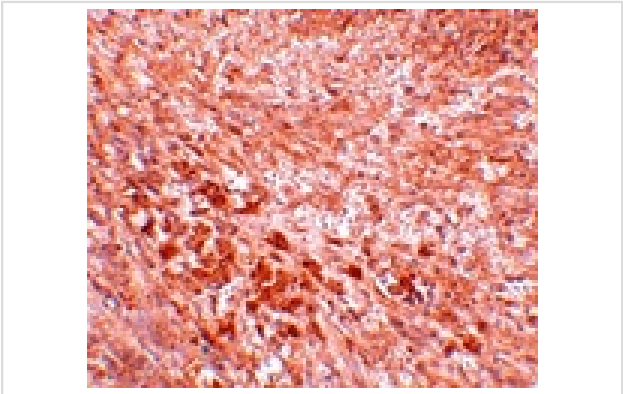
Description

Product Name	LZTR2 Antibody
Host Species	Rabbit
Clonality	Polyclonal
Purification	Affinity chromatography purified via peptide column
Applications	ELISA WB IHC
Species Reactivity	Hu Ms Rt
Immunogen Type	Peptide
Immunogen Description	Raised against an 18 amino acid peptide near the carboxy terminus of human LZTR2.
Target Name	LZTR2
Other Names	Leucine zipper-like transcription regulator 2, SEC16B, RGPR, RGPR-p117
Accession No.	Swiss-Prot:Q96JE7Gene ID:89866
Uniprot	Q96JE7
GeneID	89866;
Concentration	1mg/ml
Formulation	Supplied in PBS containing 0.02% sodium azide.
Storage	Can be stored at -20°C, stable for one year. As with all antibodies care should be taken to avoid repeated freeze thaw cycles. Antibodies should not be exposed to prolonged high temperatures.

Images



Western blot analysis of LZTR2 in mouse kidney tissue lysate with LZTR2 antibody at 1 ug/mL.



Immunohistochemistry of LZTR2 in mouse kidney tissue with LZTR2 antibody at 5 ug/mL.

Background

LZTR2, also known as RGPR-p117, is a member of the BTB-kelch superfamily and was initially described as a nuclear factor I (NFI) binding protein and transcriptional regulator of the regucalcin gene. LZTR2 is cytoplasmically localized but is thought to translocate to the nucleus, a process mediated by protein kinase C signaling following hormonal stimulation. Recent evidence has suggested that there is a strong correlation of single nucleotide polymorphisms of LZTR2 with obesity in the Japanese population similar to that seen with the TMEM18 gene and the GNPDA2, BDNF, FAIM2, and MC4R genes with obesity in Caucasian populations, suggesting LZTR2 may play a role in metabolism and obesity risk.

Note: This product is for in vitro research use only