

# ELOVL7 Antibody

Catalog No: #25071

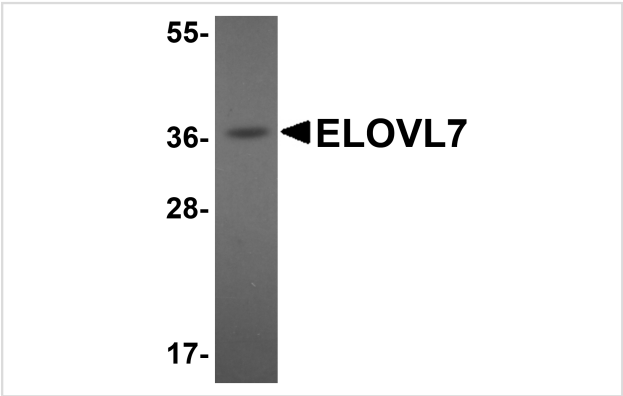


Orders: [order@signalwayantibody.com](mailto:order@signalwayantibody.com)  
Support: [tech@signalwayantibody.com](mailto:tech@signalwayantibody.com)

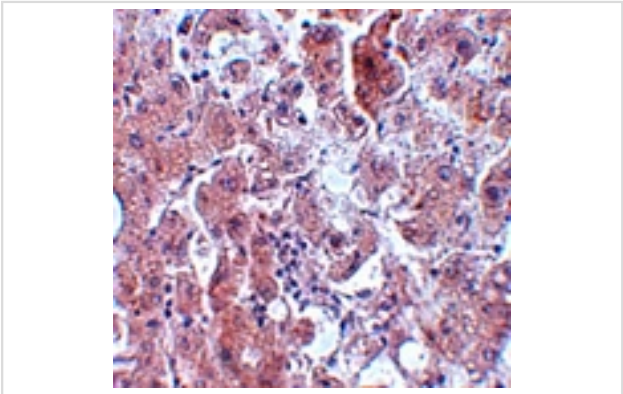
## Description

Product Name	ELOVL7 Antibody
Host Species	Rabbit
Clonality	Polyclonal
Purification	Affinity chromatography purified via peptide column
Applications	ELISA WB IHC
Species Reactivity	Hu Ms
Immunogen Type	Peptide
Immunogen Description	Raised against a 15 amino acid peptide near the amino terminus of human ELOVL7.
Target Name	ELOVL7
Other Names	Elongation of very long chain fatty acids protein 7
Accession No.	Swiss-Prot:A1L3X0Gene ID:79993
Uniprot	A1L3X0
GeneID	79993;
Concentration	1mg/ml
Formulation	Supplied in PBS containing 0.02% sodium azide.
Storage	Can be stored at -20°C, stable for one year. As with all antibodies care should be taken to avoid repeated freeze thaw cycles. Antibodies should not be exposed to prolonged high temperatures.

## Images



Western blot analysis of ELOVL7 in human liver tissue lysate with ELOVL7 antibody at 1 ug/mL.



Immunohistochemistry of ELOVL7 in human liver tissue with ELOVL7 antibody at 5 ug/mL.

## Background

---

Lipogenesis is a key event in the energy storage system and is controlled by the transcription factor sterol regulatory element-binding protein (SREBP)-1. Elongation of very long chain fatty acids protein 7 (ELOVL7) is a member of fatty acyl-CoA elongase gene family that elongates saturated very-long-chain fatty acids (SVLFA, C20:0-) and has been suggested to be involved in prostate cancer growth through saturated long-chain fatty acid metabolism. The metabolic pathways of long-chain fatty acids play an important role in the maintenance of membrane lipid composition and the generation of cell signaling precursor molecules such as eicosanoids and sphingosine-1 phosphate. Overexpression of ELOVL7 results in lipid accumulation in differentiated adipocytes; its expression is regulated by the microRNA miR-219.

---

Note: This product is for in vitro research use only