

Slc37A2 Antibody

Catalog No: #25074

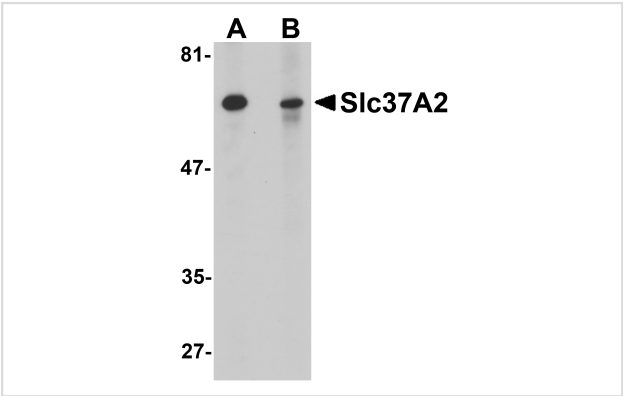


Orders: order@signalwayantibody.com
Support: tech@signalwayantibody.com

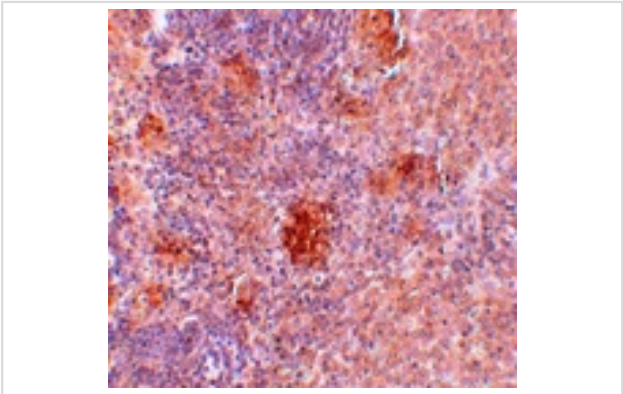
Description

Product Name	Slc37A2 Antibody
Host Species	Rabbit
Clonality	Polyclonal
Purification	Affinity chromatography purified via peptide column
Applications	ELISA WB IHC
Species Reactivity	Hu Ms Rt
Immunogen Type	Peptide
Immunogen Description	Raised against a 15 amino acid peptide near the center of human Slc37A2.
Target Name	Slc37A2
Other Names	Solute carrier family 37 member 2, sugar phosphate exchanger 2, glycerol-3-phosphate transporter
Accession No.	Swiss-Prot:Q8TED4Gene ID:219855
Uniprot	Q8TED4
GeneID	219855;
Concentration	1mg/ml
Formulation	Supplied in PBS containing 0.02% sodium azide.
Storage	Can be stored at -20°C, stable for one year. As with all antibodies care should be taken to avoid repeated freeze thaw cycles. Antibodies should not be exposed to prolonged high temperatures.

Images



Western blot analysis of Slc37A2 in mouse spleen tissue lysate with Slc37A2 antibody at 1 ug/mL in the (A) absence and (B) presence of blocking peptide.



Immunohistochemistry of Slc37A2 in rat spleen tissue with Slc37A2 antibody at 5 ug/mL.

Background

The Slc37 gene family consists of four members which have 10-12 predicted transmembrane domains and belong to the sugar-phosphate transporter superfamily. Recent experiments have demonstrated that Slc37A2 is a macrophage-specific gene selectively expressed in obese white adipose tissue. Its transcript is also expressed in spleen and thymus and the cell lines RAW264.7 and THP-1. Compared to wild-type mice, Slc37A2 mRNA is expressed at nine-fold higher levels in abdominal epididymal fat deposits of ob/ob mice, suggesting that it may be required to limit the contribution of macrophages to the inflammatory state present in obesity. Slc37A2 protein is post-translationally modified with the addition of N-linked glycans and migrates as a heterogeneous species of 50-75kDa.

Note: This product is for in vitro research use only