

MYBPC2 Antibody

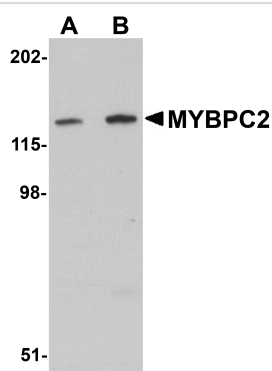
Catalog No: #25075

Orders: order@signalwayantibody.comSupport: tech@signalwayantibody.com

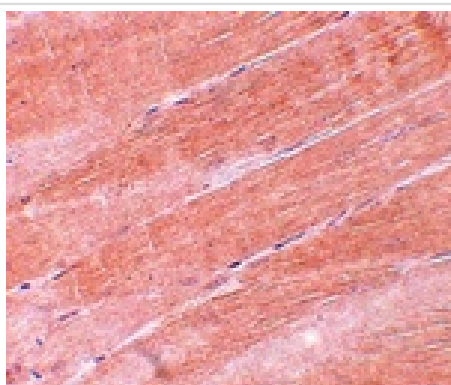
Description

Product Name	MYBPC2 Antibody
Host Species	Rabbit
Clonality	Polyclonal
Purification	Affinity chromatography purified via peptide column
Applications	ELISA WB IHC
Species Reactivity	Hu Ms
Immunogen Type	Peptide
Immunogen Description	Raised against a 15 amino acid peptide near the carboxy terminus of human MYBPC2.
Target Name	MYBPC2
Other Names	Myosin-binding protein C fast type, MYBPC, MYBPCF
Accession No.	Swiss-Prot:Q14324Gene ID:4606
Uniprot	Q14324
GeneID	4606;
Concentration	1mg/ml
Formulation	Supplied in PBS containing 0.02% sodium azide.
Storage	Can be stored at -20°C, stable for one year. As with all antibodies care should be taken to avoid repeated freeze thaw cycles. Antibodies should not be exposed to prolonged high temperatures.

Images



Western blot analysis of MYBPC2 in mouse skeletal muscle tissue lysate with MYBPC2 antibody at (A) 1 and (B) 2 ug/mL.



Immunohistochemistry of MYBPC2 in mouse skeletal muscle tissue with MYBPC2 antibody at 5 ug/mL.

Background

Myosin binding protein C (MYBPC) is a component of the thick filament of striated muscle, with the fast-type isoform designated MYBPC2. Both the fast-type and slow-type MYBPC protein contains seven immunoglobulin C2 motifs and three fibronectin type-III repeats. MYBPC2 is typically required for strong contractions and functions under anaerobic conditions. It is more similar to the cardiac isoform (MYBPC3) than to the slow-type isoform (MYBPC1) in terms of pCa50-indexed force development, length-independent cooperativity and length dependent activation. It has been suggested that in cardiac and fast muscle MYBPC2 contributes to an internal load, possibly by binding to actin via its N-terminal region.

Note: This product is for in vitro research use only