

EFHD2 Antibody

Catalog No: #25077

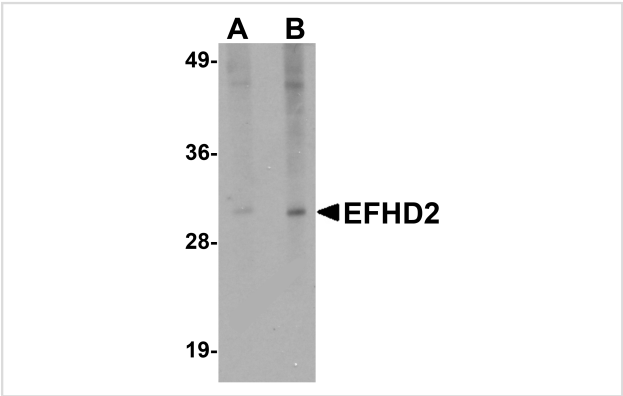


Orders: order@signalwayantibody.com
Support: tech@signalwayantibody.com

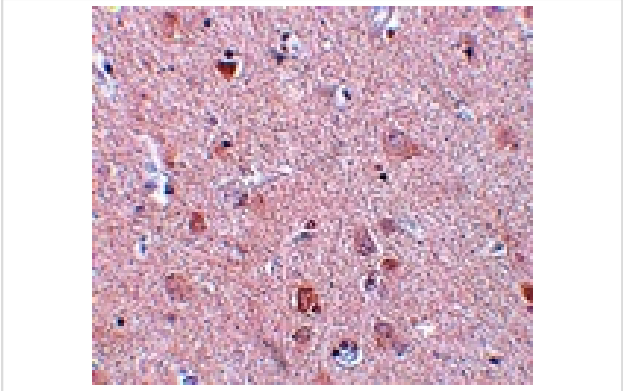
Description

Product Name	EFHD2 Antibody
Host Species	Rabbit
Clonality	Polyclonal
Purification	Affinity chromatography purified via peptide column
Applications	ELISA WB IHC
Species Reactivity	Hu Ms Rt
Immunogen Type	Peptide
Immunogen Description	Raised against a 16 amino acid peptide near the amino terminus of human EFHD2.
Target Name	EFHD2
Other Names	EF-hand domain-containing protein D2, Swiprosin-1, SWS1
Accession No.	Swiss-Prot:Q96C19Gene ID:79180
Uniprot	Q96C19
GeneID	79180;
Concentration	1mg/ml
Formulation	Supplied in PBS containing 0.02% sodium azide.
Storage	Can be stored at -20°C, stable for one year. As with all antibodies care should be taken to avoid repeated freeze thaw cycles. Antibodies should not be exposed to prolonged high temperatures.

Images



Western blot analysis of EFHD2 in mouse brain tissue lysate with EFHD2 antibody at (A) 1 and (B) 2 ug/mL.



Immunohistochemistry of EFHD2 in human brain tissue with EFHD2 antibody at 5 ug/mL.

Background

EFHD2, also known as Swiprosin-1 or SWS1, is an EF-hand and coiled-coil-containing adaptor protein that plays a role in lymphocyte physiology. EFHD2 exhibits the highest expression in CD8+ T cells and immature B cells. It provides a membrane scaffold that is required for the Syk-, SLP-65-, and PLCgamma2-dependent B-cell receptor (BCR)-induced calcium flux. EFHD2 may also regulate BCR-induced immature and primary B-cell apoptosis. It controls spontaneous apoptosis through the regulation of BCL2L1 abundance. Also, EFHD2 plays a role as negative regulator of the canonical NF- κ B-activating branch.

Note: This product is for in vitro research use only