

LYRM1 Antibody

Catalog No: #25078

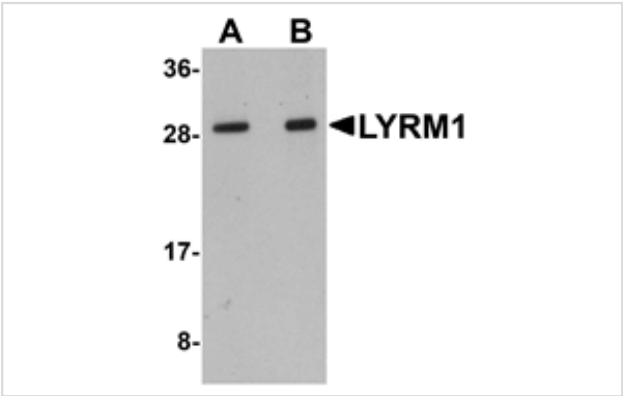


Orders: [order@signalwayantibody.com](mailto:order@signalwayantibody.com)  
Support: [tech@signalwayantibody.com](mailto:tech@signalwayantibody.com)

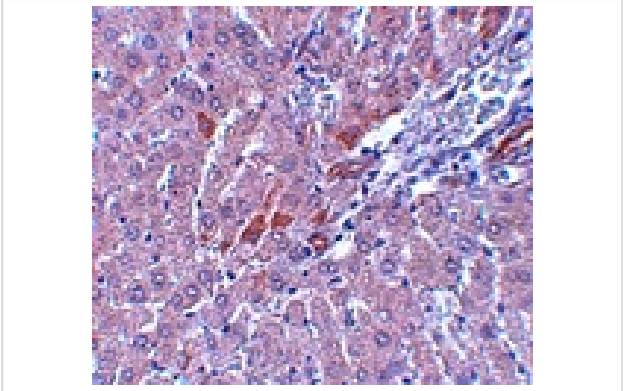
Description

Product Name	LYRM1 Antibody
Host Species	Rabbit
Clonality	Polyclonal
Purification	Affinity chromatography purified via peptide column
Applications	ELISA WB IHC
Species Reactivity	Hu Ms Rt
Immunogen Type	Peptide
Immunogen Description	Raised against a 17 amino acid peptide near the center of human LYRM1.
Target Name	LYRM1
Other Names	LYR motif-containing protein 1
Accession No.	Swiss-Prot:O43325Gene ID:57149
Uniprot	O43325
GeneID	57149;
Concentration	1mg/ml
Formulation	Supplied in PBS containing 0.02% sodium azide.
Storage	Can be stored at -20°C, stable for one year. As with all antibodies care should be taken to avoid repeated freeze thaw cycles. Antibodies should not be exposed to prolonged high temperatures.

Images



Western blot analysis of LYRM1 in human liver tissue lysate with LYRM1 antibody at (A) 1 and (B) 2 ug/mL.



Immunohistochemistry of LYRM1 in rat liver tissue with LYRM1 antibody at 5 ug/mL.

## Background

---

LYRM1 was one of many genes identified through a suppression subtractive hybridization comparing their expression in omental adipose tissue of obese patients compared to non-obese individuals. Further study confirms that both mRNA and protein levels of LYRM1 are higher in obese individuals. LYRM1 is widely expressed, with highest levels occurring in adipose and liver tissues. It is thought that LYRM1 promotes preadipocyte proliferation and can inhibit apoptosis of preadipocytes. Ectopic LYRM1 expression did not significantly affect adipogenesis, suggesting that LYRM1 can influence adipose tissue homeostasis by modulating the size of the preadipocyte pool.

---

Note: This product is for in vitro research use only