

LYRM2 Antibody

Catalog No: #25079

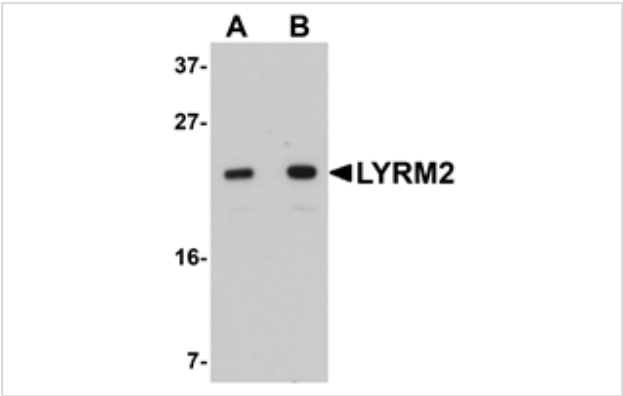


Orders: [order@signalwayantibody.com](mailto:order@signalwayantibody.com)  
Support: [tech@signalwayantibody.com](mailto:tech@signalwayantibody.com)

Description

Product Name	LYRM2 Antibody
Host Species	Rabbit
Clonality	Polyclonal
Purification	Affinity chromatography purified via peptide column
Applications	ELISA WB ICC
Species Reactivity	Hu Ms Rt
Immunogen Type	Peptide
Immunogen Description	Raised against a 16 amino acid peptide near the carboxy terminus of human LYRM2.
Target Name	LYRM2
Other Names	LYR motif-containing protein 2
Accession No.	Swiss-Prot:Q9NU23Gene ID:57226
Uniprot	Q9NU23
GeneID	57226;
Concentration	1mg/ml
Formulation	Supplied in PBS containing 0.02% sodium azide.
Storage	Can be stored at -20°C, stable for one year. As with all antibodies care should be taken to avoid repeated freeze thaw cycles. Antibodies should not be exposed to prolonged high temperatures.

Images



Western blot analysis of LYRM2 in A549 cell lysate with LYRM2 antibody at (A) 1 and (B) 2 ug/mL.



Immunocytochemistry of LYRM2 in A549 cells with LYRM2 antibody at 20 ug/mL.

## Background

---

The Lyr motif found in the LYR-motif containing protein family is similar to that found in the *Saccharomyces cerevisiae* protein ISD11, an iron-sulfur protein in the mitochondria that is thought to play a role in iron homeostasis. No known function has been assigned to LYRM2, although LYRM1 is thought to be involved in preadipocyte progression and LYRM3 has been suggested to be a candidate gene for the branchio-oto-renal (BOR) syndrome.

---

Note: This product is for in vitro research use only