

LYRM3 Antibody

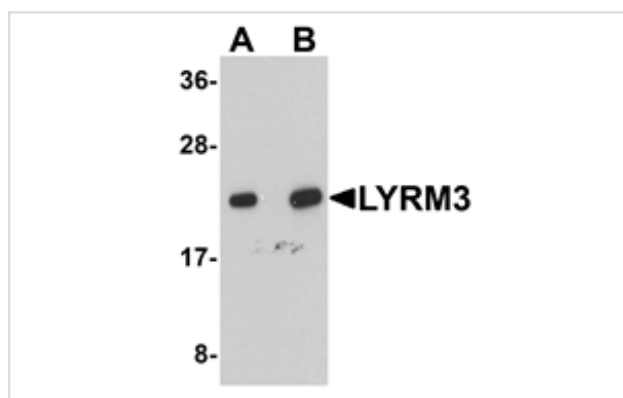
Catalog No: #25080

Orders: order@signalwayantibody.comSupport: tech@signalwayantibody.com

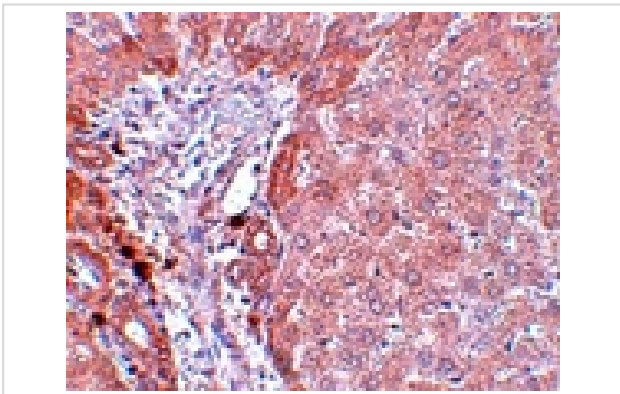
Description

Product Name	LYRM3 Antibody
Host Species	Rabbit
Clonality	Polyclonal
Purification	Affinity chromatography purified via peptide column
Applications	ELISA WB IHC
Species Reactivity	Hu Ms Rt
Immunogen Type	Peptide
Immunogen Description	Raised against a 17 amino acid peptide near the carboxy terminus of human LYRM3.
Target Name	LYRM3
Other Names	LYR motif-containing protein 3, NADH dehydrogenase (ubiquinone) 1 beta subcomplex 9, NDUFB9, B22, UQOR22
Accession No.	Q9Y6M9
Uniprot	Q9Y6M9
GeneID	4715;
Concentration	1mg/ml
Formulation	Supplied in PBS containing 0.02% sodium azide.
Storage	Can be stored at -20°C, stable for one year. As with all antibodies care should be taken to avoid repeated freeze thaw cycles. Antibodies should not be exposed to prolonged high temperatures.

Images



Western blot analysis of LYRM3 in human liver tissue lysate with LYRM3 antibody at (A) 1 and (B) 2 ug/mL.



Immunohistochemistry of LYRM3 in rat liver tissue with LYRM3 antibody at 5 ug/mL.

Background

LYRM3, also known as NADH dehydrogenase (ubiquinone) 1 beta subcomplex 9 (NDUFB9), is a ubiquitously expressed LYR-motif containing protein. It has been suggested to be a candidate gene for the branchio-oto-renal (BOR) syndrome, which is characterized by branchial and renal abnormalities and heredity deafness disorders. Other than its LYR-motif, LYRM3 appears to have no functional or structural relationship to either LYRM1 or LYRM2.

Note: This product is for in vitro research use only