

NSA1 Antibody

Catalog No: #25083

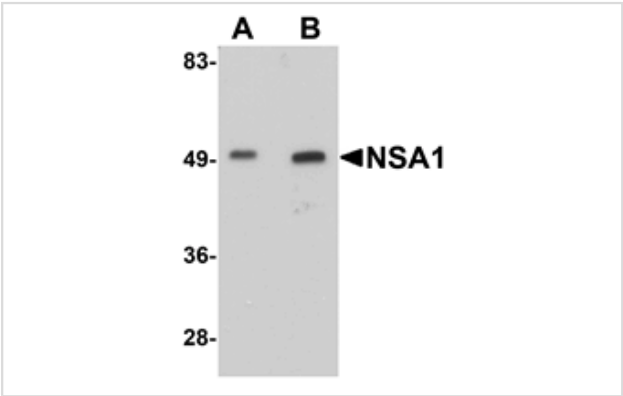


Orders: order@signalwayantibody.com
Support: tech@signalwayantibody.com

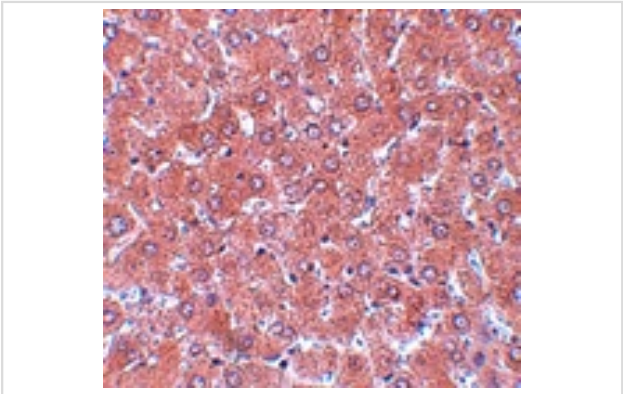
Description

Product Name	NSA1 Antibody
Host Species	Rabbit
Clonality	Polyclonal
Purification	Affinity chromatography purified via peptide column
Applications	ELISA WB IHC
Species Reactivity	Hu Ms Rt
Immunogen Type	Peptide
Immunogen Description	Raised against an 18 amino acid peptide near the carboxy terminus of human NSA1.
Target Name	NSA1
Other Names	NOP seven-associated protein 1, WD repeat-containing protein 74, WDR74
Accession No.	Q6RFH5
Uniprot	Q6RFH5
GeneID	54663;
Concentration	1mg/ml
Formulation	Supplied in PBS containing 0.02% sodium azide.
Storage	Can be stored at -20°C, stable for one year. As with all antibodies care should be taken to avoid repeated freeze thaw cycles. Antibodies should not be exposed to prolonged high temperatures.

Images



Western blot analysis of NSA1 in mouse liver tissue lysate with NSA1 antibody at (A) 1 and (B) 2 ug/mL.



Immunohistochemistry of NSA1 in rat liver tissue with NSA1 antibody at 5 ug/mL.

Background

The yeast nucleolar protein NOP7 is necessary for the maturation of 66S preribosomes and interacts with numerous other proteins. One such protein is an essential, conserved WD repeat protein, NOP seven-associated protein 1 (NSA1), that is also required for the yeast 66S ribosome assembly. NSA1 is also associated with the AAA ATPase Rix7, and release of NSA1 from a novel late nucleolar pre-60S requires the Rix7 function. NSA1 has also been found upregulated in mammalian cancer cells, suggesting it may also play a role in cell proliferation.

Note: This product is for in vitro research use only