

Stathmin-2 Polyclonal Antibody

Catalog No: #29576

Package Size: #29576-1 50ul #29576-2 100ul

Orders: order@signalwayantibody.comSupport: tech@signalwayantibody.com

Description

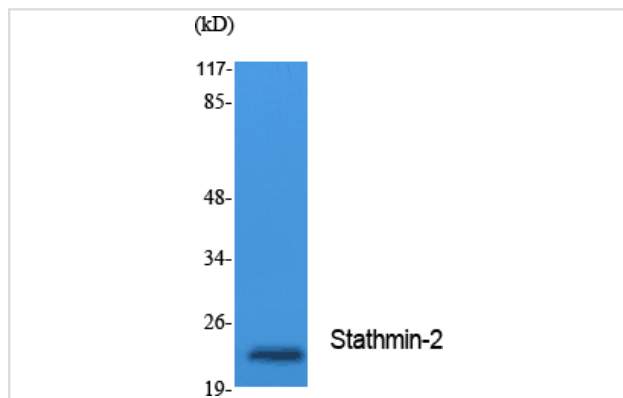
Product Name	Stathmin-2 Polyclonal Antibody
Host Species	Rabbit
Clonality	Polyclonal
Applications	WB IHC-p IF
Species Reactivity	Hu Ms Rt
Immunogen Description	Synthesized peptide derived from the Internal region of human Stathmin-2.
Calculated MW	20 kDa
Storage	Store at -20°C/1 year

Application Details

IHC-p: 1:100-300

WB 1:500-2000

Images



Western Blot analysis of extracts from Jurkat cells, using Stathmin-2 Polyclonal Antibody.

Background

stathmin 2(STMN2) Homo sapiens This gene encodes a member of the stathmin family of phosphoproteins. Stathmin proteins function in microtubule dynamics and signal transduction. The encoded protein plays a regulatory role in neuronal growth and is also thought to be involved in osteogenesis. Reductions in the expression of this gene have been associated with Down's syndrome and Alzheimer's disease. Alternatively spliced transcript variants have been observed for this gene. A pseudogene of this gene is located on the long arm of chromosome 6.

Note: This product is for in vitro research use only