

ZC3H12D Antibody

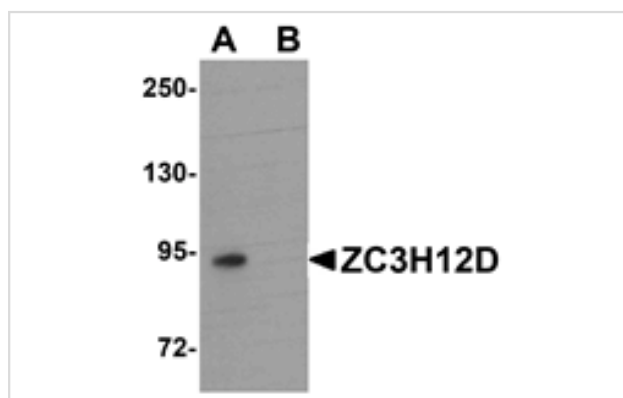
Catalog No: #25088

Orders: order@signalwayantibody.comSupport: tech@signalwayantibody.com

Description

Product Name	ZC3H12D Antibody
Host Species	Rabbit
Clonality	Polyclonal
Purification	Affinity chromatography purified via peptide column
Applications	ELISA WB
Species Reactivity	Hu
Immunogen Type	Peptide
Immunogen Description	Raised against a 17 amino acid peptide near the carboxy terminus of human ZC3H12D.
Target Name	ZC3H12D
Other Names	Zinc finger CCCH-type containing 12D, MCP-1-induced protein 4, MCP4
Accession No.	Swiss-Prot:A2A288Gene ID:340152
Uniprot	A2A288
GeneID	340152;
Concentration	1mg/ml
Formulation	Supplied in PBS containing 0.02% sodium azide.
Storage	Can be stored at -20°C, stable for one year. As with all antibodies care should be taken to avoid repeated freeze thaw cycles. Antibodies should not be exposed to prolonged high temperatures.

Images



Western blot analysis of ZC3H12D in THP-1 cell lysate with ZC3H12D antibody at 1 ug/mL in (A) the absence and (B) the presence of blocking peptide.

Background

ZC3H12D, also known as MCP4, is a member of a family of novel CCCH-zinc finger proteins that includes ZC3H12A, a protein that is thought to be involved in macrophage activation, host immunity and inflammatory diseases. ZC3H12D is highly expressed in spleen, intestine, and colon. Similar to ZC3H12A and ZC3H12C, ZC3H12D expression in murine macrophages is also increased after treatment with lipopolysaccharide (LPS), although not to the same level as ZC3H12A. This pattern of expression was not duplicated in human-derived macrophages, suggesting it also may play a different role in host immunity and inflammatory response.

Note: This product is for in vitro research use only