

## cofilin1(phospho-Tyr139) Antibody

Catalog No: #11506

Package Size: #11506-1 50ul #11506-2 100ul

Orders: order@signalwayantibody.com

Support: tech@signalwayantibody.com

## Description

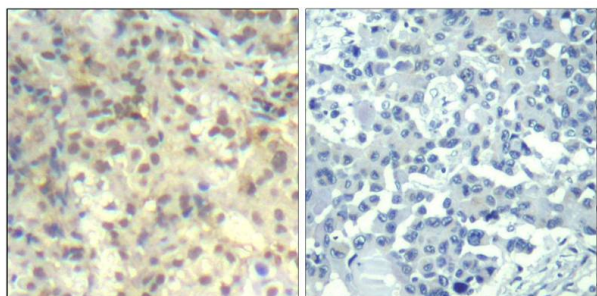
Product Name	cofilin1(phospho-Tyr139) Antibody
Host Species	Rabbit
Clonality	Polyclonal
Purification	Antibodies were produced by immunizing rabbits with synthetic phosphopeptide and KLH conjugates. Antibodies were purified by affinity-chromatography using epitope-specific phosphopeptide. Non-phospho specific antibodies were removed by chromatography using non-phosphopeptide.
Applications	IHC
Species Reactivity	Hu Ms Rt
Specificity	The antibody detects endogenous level of cofilin1 only when phosphorylated at tyrosine 139.
Immunogen Type	Peptide-KLH
Immunogen Description	Peptide sequence around phosphorylation site of tyrosine 139 (N-C-Y(p)-E-E) derived from Human cofilin.
Target Name	cofilin1
Modification	Phospho
Other Names	CFL; CFL1;
Accession No.	Swiss-Prot: P23528NCBI Protein: NP_005498.1
Uniprot	P23528
GenelD	1072;
Concentration	1.0mg/ml
Formulation	Supplied at 1.0mg/mL in phosphate buffered saline (without Mg <sup>2+</sup> and Ca <sup>2+</sup> ), pH 7.4, 150mM NaCl, 0.02% sodium azide and 50% glycerol.
Storage	Store at -20°C for long term preservation (recommended). Store at 4°C for short term use.

## Application Details

Predicted MW: 19kd

Immunohistochemistry: 1:50~1:100

## Images



Immunohistochemical analysis of paraffin-embedded human lung carcinoma tissue using cofilin1(Phospho-Tyr139) Antibody #11506(left) or the same antibody preincubated with blocking peptide(right).

## Background

---

Controls reversibly actin polymerization and depolymerization in a pH-sensitive manner. It has the ability to bind G- and F-actin in a 1:1 ratio of cofilin to actin. It is the major component of intranuclear and cytoplasmic actin rods.

Carrier, M. et al. (1999) J. Biol. Chem. 274, 33827-33830.

Arber, S. et al. (1998) Nature 393, 805-809.

Yang, N. et al. (1998) Nature 393, 809-812.

---

Note: This product is for in vitro research use only