

ENC-2 Antibody

Catalog No: #25095

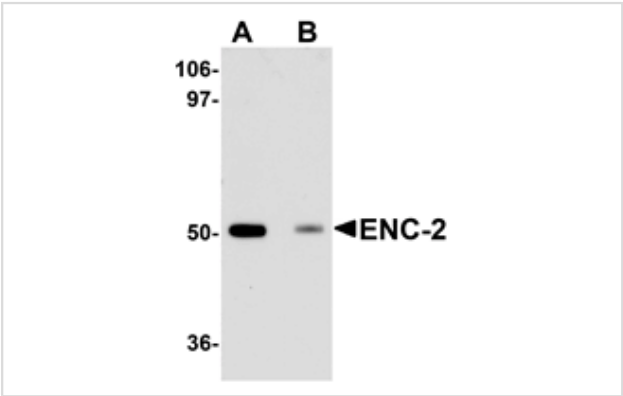


Orders: order@signalwayantibody.com
Support: tech@signalwayantibody.com

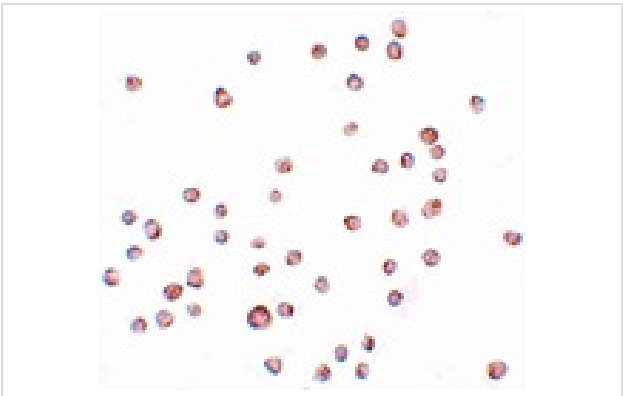
Description

Product Name	ENC-2 Antibody
Host Species	Chicken
Clonality	Polyclonal
Purification	Affinity chromatography purified via peptide column
Applications	ELISA WB ICC
Species Reactivity	Hu
Immunogen Type	Peptide
Immunogen Description	Raised against a 14 amino acid peptide near the center of human ENC-2.
Target Name	ENC-2
Other Names	Ectoderm-neural cortex-2, Kelch-like protein 25, KLHL25
Accession No.	Swiss-Prot:Q9H0H3Gene ID:64410
Uniprot	Q9H0H3
GeneID	64410;
Concentration	1mg/ml
Formulation	Supplied in PBS containing 0.02% sodium azide.
Storage	Can be stored at -20°C, stable for one year. As with all antibodies care should be taken to avoid repeated freeze thaw cycles. Antibodies should not be exposed to prolonged high temperatures.

Images



Western blot analysis of ENC-2 in Jurkat cell lysate with ENC-2 antibody at 1 ug/mL in (A) the absence and (B) the presence of blocking peptide.



Immunocytochemistry of ENC-2 in Jurkat cells with ENC-2 antibody at 5 ug/mL.

Background

The ectoderm-neural cortex-2 (ENC-2) protein is a member of the BTB/PDZ Kelch protein family displaying significant homology to ENC-1, an actin-binding protein involved in neural fate specification during embryogenesis and adipocyte maturation. The exact function of ENC-2 has yet to be determined, but it has been suggested to be involved in the differentiation of neuronal precursor cells into neurons and astrocytes.

Note: This product is for in vitro research use only