

# TCC52 Antibody

Catalog No: #25097

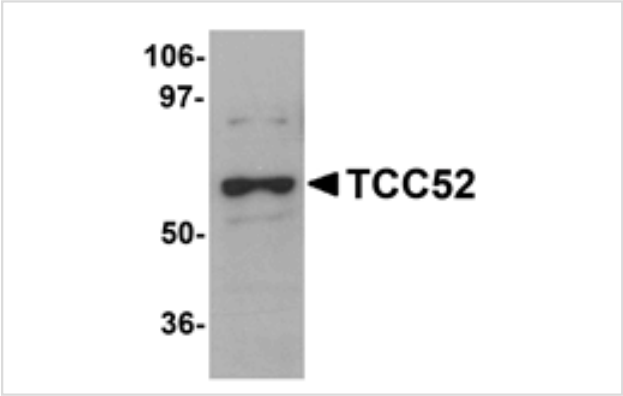


Orders: [order@signalwayantibody.com](mailto:order@signalwayantibody.com)  
Support: [tech@signalwayantibody.com](mailto:tech@signalwayantibody.com)

## Description

Product Name	TCC52 Antibody
Host Species	Chicken
Clonality	Polyclonal
Purification	Affinity chromatography purified via peptide column
Applications	ELISA WB ICC
Species Reactivity	Hu Ms Rt
Immunogen Type	Peptide
Immunogen Description	Raised against a 15 amino acid peptide near the carboxy terminus of human TCC52.
Target Name	TCC52
Other Names	Testis cancer centrosome-related protein 52, DDB1 and CUL4 associated factor 12, DCAF12, CT102, WDR40A
Accession No.	Swiss-Prot:Q5T6F0Gene ID:25853
Uniprot	Q5T6F0
GeneID	25853;
Concentration	1mg/ml
Formulation	Supplied in PBS containing 0.02% sodium azide.
Storage	Can be stored at -20°C, stable for one year. As with all antibodies care should be taken to avoid repeated freeze thaw cycles. Antibodies should not be exposed to prolonged high temperatures.

## Images



Western blot analysis of TCC52 in 293 cell lysate with TCC52 antibody at 1 ug/mL.



Immunocytochemistry of TCC52 in 293 cells with TCC52 antibody at 2.5 ug/mL.

## Background

Cancer-testis (CT) antigens are a type of antigen whose expression is highly restricted, primarily in normal testis, but aberrantly in different tumor types. Their immunogenicity in cancer patients makes them prime targets for immunotherapy of human tumors. One such CT antigen is TCC52, a novel centrosomal protein. TCC52 is a WD repeat-containing protein that interacts with the COP9 signalosome, a macromolecular complex that interacts with cullin-RING E3 ligases and regulates their activity by hydrolyzing cullin-Nedd8 conjugates. The normal biological function of this protein is not known at this time.

Note: This product is for in vitro research use only