

TINP1 Antibody

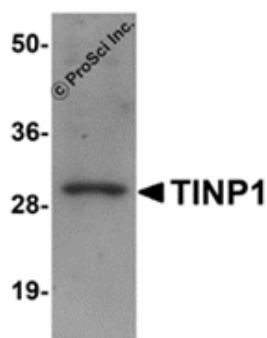
Catalog No: #25098

Orders: order@signalwayantibody.comSupport: tech@signalwayantibody.com

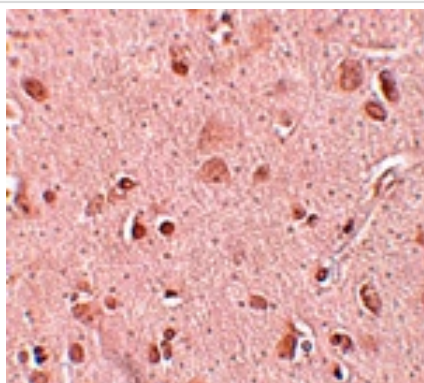
Description

Product Name	TINP1 Antibody
Host Species	Chicken
Clonality	Polyclonal
Purification	Affinity chromatography purified via peptide column
Applications	ELISA WB IHC
Species Reactivity	Hu Ms Rt
Immunogen Type	Peptide
Immunogen Description	Raised against a 13 amino acid peptide near the carboxy terminus of human TINP1.
Target Name	TINP1
Other Names	TGF-beta inducible nuclear protein 1, Nop seven-associated 2, NSA2, Hairy cell leukemia protein 1, HCLG1
Accession No.	Swiss-Prot:O95478Gene ID:10412
Uniprot	O95478
GeneID	10412;
Concentration	1mg/ml
Formulation	Supplied in PBS containing 0.02% sodium azide.
Storage	Can be stored at -20°C, stable for one year. As with all antibodies care should be taken to avoid repeated freeze thaw cycles. Antibodies should not be exposed to prolonged high temperatures.

Images



Western blot analysis of TINP1 in rat brain tissue lysate with TINP1 antibody at (A) 1 and (B) 2 ug/mL.



Immunohistochemistry of TINP1 in human brain tissue with TINP1 antibody at 5 ug/mL.

Background

TINP1 (TGF-beta inducible nuclear protein 1), also known as NSA2 (Nop seven-associated 2), is a highly conserved nucleolar protein essential for large ribosomal subunit biogenesis. NSA2 is broadly expressed in human tissues and cultured cell lines, and located in the nucleolus of the cell. It is thought to be involved in cell proliferation and cell cycle regulation.

Note: This product is for in vitro research use only