

PAX6 Rabbit mAb

Catalog No: #52059



Package Size: #52059-1 50ul #52059-2 100ul

Orders: order@signalwayantibody.com
Support: tech@signalwayantibody.com

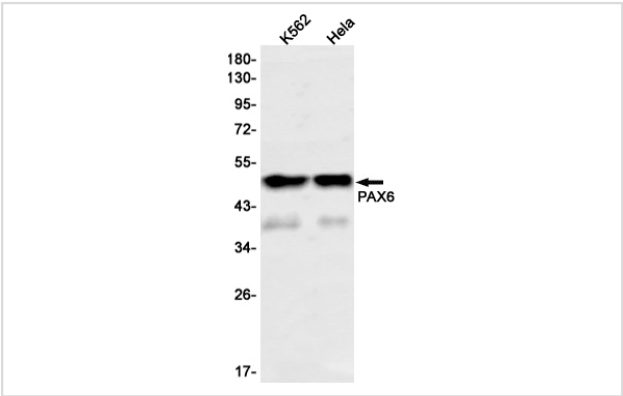
Description

Product Name	PAX6 Rabbit mAb
Host Species	Recombinant Rabbit
Clonality	Monoclonal antibody
Clone No.	S01-1G8
Isotype	Rabbit IgG
Purification	Affinity Purified
Applications	WB
Species Reactivity	Human,Mouse,Rat
Immunogen Description	Recombinant protein of human PAX6
Conjugates	Unconjugated
Modification	Unmodification
Other Names	AN; AN2; MGDA; WAGR; D11S812E; MGC17209; PAX6
Accession No.	Swiss-Prot:P26367GenelD:5080
Uniprot	P26367
GenelD	5080
Calculated MW	Calculated MW: 47 kDa; Observed MW: 47 kDa
Concentration	0.3 mg/ml
Formulation	50mM Tris-Glycine(pH 7.4), 0.15M NaCl, 40% Glycerol, 0.01% Sodium azide and 0.05% BSA
Storage	Store at 4°C short term. Aliquot and store at -20°C long term. Avoid freeze/thaw cycles.

Application Details

WB: 1/1000

Images



Western blot detection of PAX6 in K562,HeLa cell lysates using PAX6 Rabbit mAb(1:1000 diluted).Predicted band size:47kDa.Observed band size:47kDa.

Background

Transcription factor with important functions in the development of the eye, nose, central nervous system and pancreas. Required for the differentiation of pancreatic islet alpha cells (By similarity).

Competes with PAX4 in binding to a common element in the glucagon, insulin and somatostatin promoters. Regulates specification of the ventral neuron subtypes by establishing the correct progenitor domains (By similarity).

Acts as a transcriptional repressor of NFATC1-mediated gene expression (By similarity).

Note: This product is for in vitro research use only