

Profilin 1 Rabbit mAb

Catalog No: #52073



Package Size: #52073-1 50ul #52073-2 100ul

Orders: [order@signalwayantibody.com](mailto:order@signalwayantibody.com)  
Support: [tech@signalwayantibody.com](mailto:tech@signalwayantibody.com)

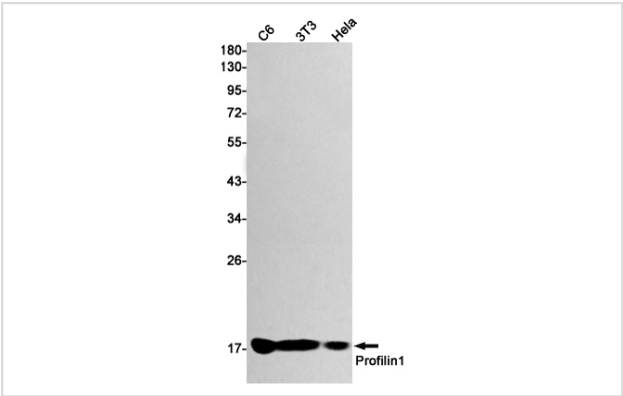
Description

Product Name	Profilin 1 Rabbit mAb
Host Species	Recombinant Rabbit
Clonality	Monoclonal antibody
Clone No.	S06-6H7
Isotype	Rabbit IgG
Purification	Affinity Purified
Applications	WB IHC
Species Reactivity	Human,Mouse,Rat
Immunogen Description	A synthetic peptide of human Profilin 1
Conjugates	Unconjugated
Modification	Unmodification
Other Names	Epididymis tissue protein Li 184a;Profilin I
Accession No.	Swiss-Prot:P07737GenelD:5216
Uniprot	P07737
GenelD	5216
Calculated MW	Calculated MW: 15 kDa; Observed MW: 15 kDa
Concentration	0.3 mg/ml
Formulation	50mM Tris-Glycine(pH 7.4), 0.15M NaCl, 40% Glycerol, 0.01% Sodium azide and 0.05% BSA
Storage	Store at 4°C short term. Aliquot and store at -20°C long term. Avoid freeze/thaw cycles.

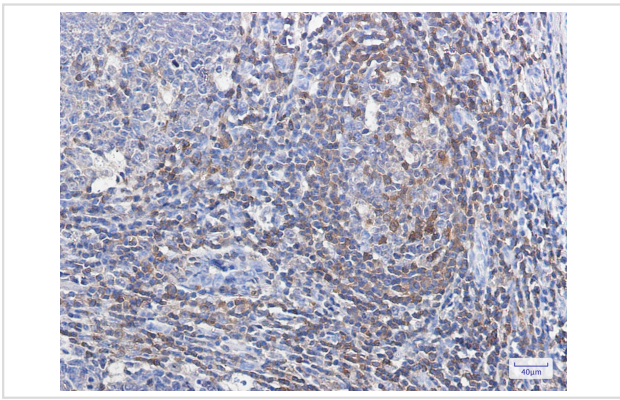
Application Details

WB: 1/2000; IHC: 1/50;

Images



Western blot detection of Profilin 1 in C6,3T3,Hela cell lysates using Profilin 1 Rabbit mAb(1:1000 diluted).Predicted band size:15kDa.Observed band size:15kDa.



Immunohistochemistry of Profilin 1 in paraffin-embedded Human tonsil using Profilin 1 Rabbit mAb at dilution 1/100

## Background

Swiss-Prot Acc.P07737. Binds to actin and affects the structure of the cytoskeleton. At high concentrations, profilin prevents the polymerization of actin, whereas it enhances it at low concentrations. By binding to PIP<sub>2</sub>, it inhibits the formation of IP<sub>3</sub> and DG. Inhibits androgen receptor (AR) and HTT aggregation and binding of G-actin is essential for its inhibition of AR.

Note: This product is for in vitro research use only