

MCL1 Rabbit mAb

Catalog No: #52091

Package Size: #52091-1 50ul #52091-2 100ul

Orders: order@signalwayantibody.comSupport: tech@signalwayantibody.com

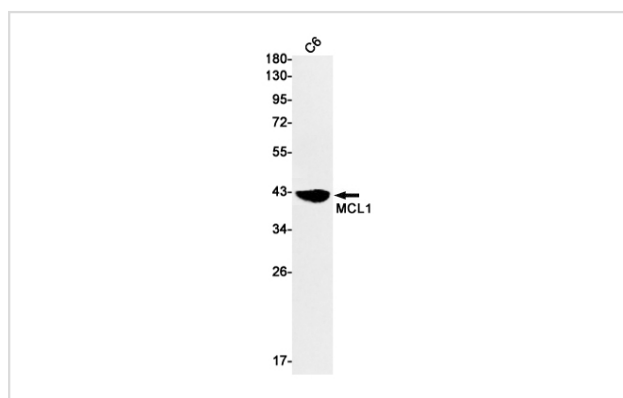
Description

Product Name	MCL1 Rabbit mAb
Host Species	Recombinant Rabbit
Clonality	Monoclonal antibody
Clone No.	S04-3A4
Isotype	Rabbit IgG
Purification	Affinity Purified
Applications	WB IF
Species Reactivity	Human,Mouse,Rat
Immunogen Description	A synthetic peptide of human MCL1
Conjugates	Unconjugated
Modification	Unmodification
Other Names	TM; EAT; MCL1L; MCL1S; Mcl-1; BCL2L3; MCL1-ES; bcl2-L-3; mcl1/EAT
Accession No.	Swiss-Prot:Q07820GeneID:4170
Uniprot	Q07820
GeneID	4170
Calculated MW	Calculated MW: 37 kDa; Observed MW: 40 kDa
Concentration	0.3 mg/ml
Formulation	50mM Tris-Glycine(pH 7.4), 0.15M NaCl, 40% Glycerol, 0.01% Sodium azide and 0.05% BSA
Storage	Store at 4°C short term. Aliquot and store at -20°C long term. Avoid freeze/thaw cycles.

Application Details

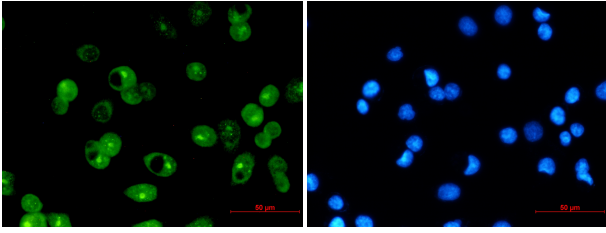
WB: 1/1000; ICC/IF: 1/50;

Images



Western blot detection of MCL1 in C6 cell lysates using MCL1 Rabbit mAb(1:1000 diluted).Predicted band size:37kDa.Observed band size:40kDa.

Immunofluorescence of MCL1 (green) in MCF-7 using MCL1 antibody at dilution 1/20, and DAPI(blue)



Background

Swiss-Prot Acc.Q07820.Involved in the regulation of apoptosis versus cell survival, and in the maintenance of viability but not of proliferation. Mediates its effects by interactions with a number of other regulators of apoptosis. Isoform 1 inhibits apoptosis. Isoform 2 promotes apoptosis.

Note: This product is for in vitro research use only