

GSK3 alpha/beta Rabbit mAb

Catalog No: #52093



Package Size: #52093-1 50ul #52093-2 100ul

Orders: order@signalwayantibody.com
Support: tech@signalwayantibody.com

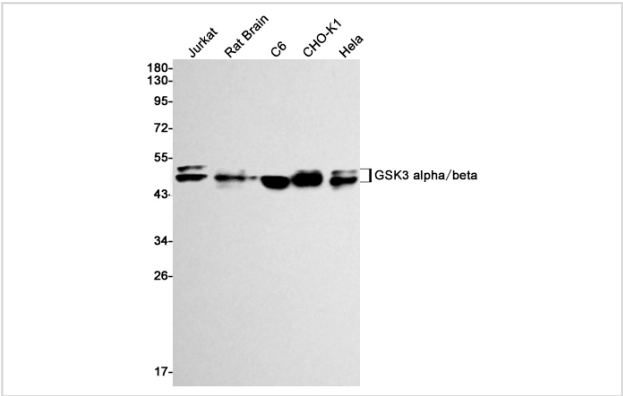
Description

Product Name	GSK3 alpha/beta Rabbit mAb
Host Species	Recombinant Rabbit
Clonality	Monoclonal antibody
Clone No.	S08-8G7
Isotype	Rabbit IgG
Purification	Affinity Purified
Applications	WB
Species Reactivity	Human,Mouse,Rat
Immunogen Description	A synthetic peptide of human GSK3 alpha
Conjugates	Unconjugated
Modification	Unmodification
Other Names	Serine/threonine-protein kinase GSK3A
Accession No.	Swiss-Prot:P49840GenelD:2931
Uniprot	P49840
GenelD	2931
Calculated MW	Calculated MW: 51,47 kDa; Observed MW: 51,47 kDa
Concentration	0.3 mg/ml
Formulation	50mM Tris-Glycine(pH 7.4), 0.15M NaCl, 40% Glycerol, 0.01% Sodium azide and 0.05% BSA
Storage	Store at 4°C short term. Aliquot and store at -20°C long term. Avoid freeze/thaw cycles.

Application Details

WB: 1/1000

Images



Western blot detection of GSK3 alpha + beta in Jurkat,Rat Brain,C6,CHO-K1,Hela cell lysates using GSK3 alpha + beta Rabbit mAb(1:1000 diluted).Predicted band size:51,47 kDa.Observed band size:51,47kDa.

Background

Constitutively active protein kinase that acts as a negative regulator in the hormonal control of glucose homeostasis, Wnt signaling and regulation of transcription factors and microtubules, by phosphorylating and inactivating glycogen synthase (GYS1 or GYS2), CTNNB1/beta-catenin, APC and AXIN1 (PubMed:11749387, PubMed:17478001, PubMed:19366350).

Requires primed phosphorylation of the majority of its substrates (PubMed:11749387, PubMed:17478001, PubMed:19366350).

Contributes to insulin regulation of glycogen synthesis by phosphorylating and inhibiting GYS1 activity and hence glycogen synthesis (PubMed:11749387, PubMed:17478001, PubMed:19366350).

Regulates glycogen metabolism in liver, but not in muscle (By similarity).

Note: This product is for in vitro research use only