

14 3 3 Rabbit mAb

Catalog No: #52110



Package Size: #52110-1 50ul #52110-2 100ul

Orders: [order@signalwayantibody.com](mailto:order@signalwayantibody.com)  
Support: [tech@signalwayantibody.com](mailto:tech@signalwayantibody.com)

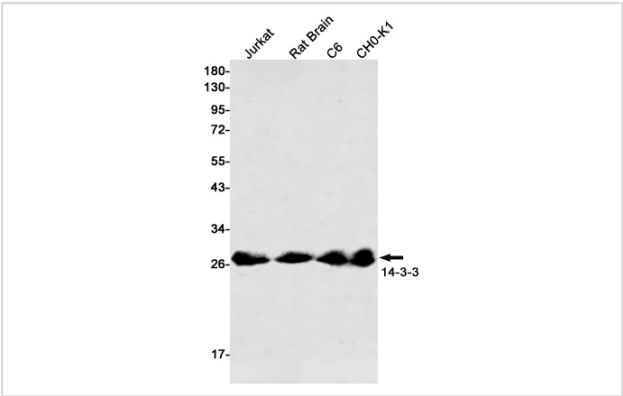
Description

Product Name	14 3 3 Rabbit mAb
Host Species	Recombinant Rabbit
Clonality	Monoclonal antibody
Clone No.	S07-1A3
Isotype	Rabbit IgG
Purification	Affinity Purified
Applications	WB
Species Reactivity	Human,Mouse,Rat
Immunogen Description	A synthetic peptide of human 14-3-3
Conjugates	Unconjugated
Modification	Unmodification
Other Names	HS1; GW128; YWHAA; KCIP-1; HEL-S-1
Accession No.	Swiss-Prot:P31946GenelD:7529
Uniprot	P31946
GenelD	7529
Calculated MW	Calculated MW: 28 kDa; Observed MW: 27-29 kDa
Concentration	0.3 mg/ml
Formulation	50mM Tris-Glycine(pH 7.4), 0.15M NaCl, 40% Glycerol, 0.01% Sodium azide and 0.05% BSA
Storage	Store at 4°C short term. Aliquot and store at -20°C long term. Avoid freeze/thaw cycles.

Application Details

WB: 1/2000

Images



Western blot detection of 41701 in Jurkat,Rat Brain,C6,CHO-K1 cell lysates using 14-3-3 Rabbit mAb(1:500 diluted).Predicted band size:28kDa.Observed band size:27-29kDa.

## Background

---

Adapter protein implicated in the regulation of a large spectrum of both general and specialized signaling pathways. Binds to a large number of partners, usually by recognition of a phosphoserine or phosphothreonine motif. Binding generally results in the modulation of the activity of the binding partner. Negative regulator of osteogenesis. Blocks the nuclear translocation of the phosphorylated form (by AKT1) of SRPK2 and antagonizes its stimulatory effect on cyclin D1 expression resulting in blockage of neuronal apoptosis elicited by SRPK2. Negative regulator of signaling cascades that mediate activation of MAP kinases via AKAP13.

---

Note: This product is for in vitro research use only