

# Cathepsin B Rabbit mAb

Catalog No: #52195



Package Size: #52195-1 50ul #52195-2 100ul

Orders: [order@signalwayantibody.com](mailto:order@signalwayantibody.com)  
Support: [tech@signalwayantibody.com](mailto:tech@signalwayantibody.com)

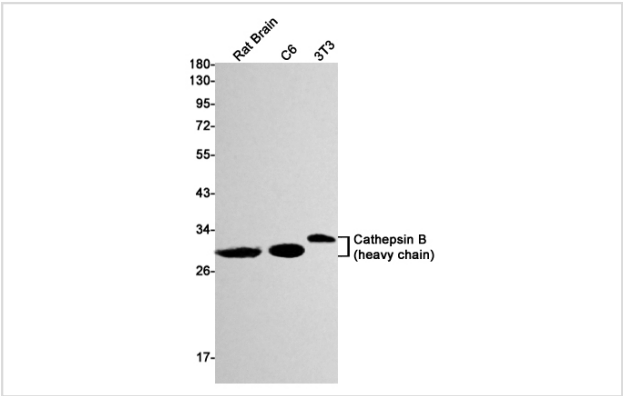
## Description

Product Name	Cathepsin B Rabbit mAb
Host Species	Recombinant Rabbit
Clonality	Monoclonal antibody
Clone No.	S08-7H4
Isotype	Rabbit IgG
Purification	Affinity Purified
Applications	WB IF
Species Reactivity	Mouse,Rat
Immunogen Description	Recombinant protein of mouse Cathepsin B
Conjugates	Unconjugated
Modification	Unmodification
Other Names	CB
Accession No.	Swiss-Prot:P10605GenelD:13030
Uniprot	P10605
GenelD	13030
Calculated MW	Calculated MW: 37 kDa; Observed MW: 44,27,24 kDa
Concentration	0.3 mg/ml
Formulation	50mM Tris-Glycine(pH 7.4), 0.15M NaCl, 40% Glycerol, 0.01% Sodium azide and 0.05% BSA
Storage	Store at 4°C short term. Aliquot and store at -20°C long term. Avoid freeze/thaw cycles.

## Application Details

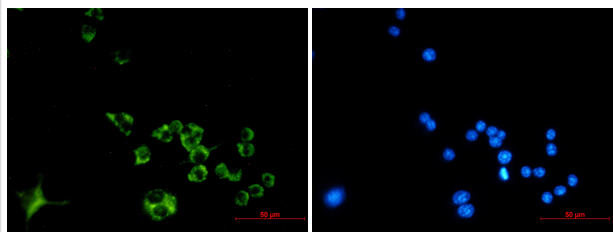
WB: 1/1000; ICC/IF: 1/50;

## Images



Western blot detection of Cathepsin B in Rat Brain,C6,3T3 cell lysates using Cathepsin B Rabbit mAb(1:1000 diluted).Predicted band size:37kDa.Observed band size: 44,27,24kDa.

Immunofluorescence of Cathepsin B (green) in Raw264.7 using Cathepsin B antibody at dilution 1/50, and DAPI(blue)



## Background

Swiss-Prot Acc.P10605.Thiol protease which is believed to participate in intracellular degradation and turnover of proteins. Cleaves matrix extracellular phosphoglycoprotein MEPE. Has also been implicated in tumor invasion and metastasis.

Note: This product is for in vitro research use only