

## CDK6 Rabbit mAb

Catalog No: #52213

Package Size: #52213-1 50ul #52213-2 100ul

Orders: order@signalwayantibody.com

Support: tech@signalwayantibody.com

## Description

Product Name	CDK6 Rabbit mAb
Clone No.	S03-2G5
Isotype	Rabbit IgG
Purification	Affinity-chromatography
Applications	WB;IHC;ICC/IF;FC
Species Reactivity	Human
Immunogen Description	A synthesized peptide derived from human CDK6
Conjugates	Unconjugated
Modification	Unmodification
Other Names	MCPH12; PLSTIRE
Accession No.	Swiss-Prot:Q00534GeneID:1021
Uniprot	Q00534
GeneID	1021
Calculated MW	Calculated MW: 37 kDa; Observed MW: 37 kDa
Concentration	0.3 mg/ml
Formulation	Rabbit IgG in 10mM phosphate buffered saline , pH 7.4, 150mM sodium chloride, 0.05% BSA, 0.02% sodium azide and 50% glycerol.
Storage	Store at +4°C for short term. Store at -20°C for long term. Avoid freeze/thaw cycle.

## Application Details

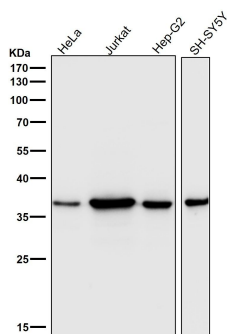
WB 1:1000-1:5000;

IHC 1:100-1:200;

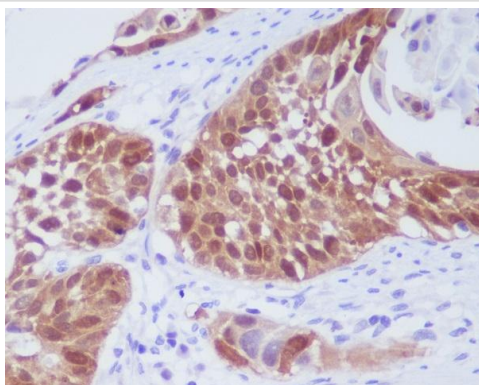
ICC/IF 1:50-1:200;

FC 1:20-1:100

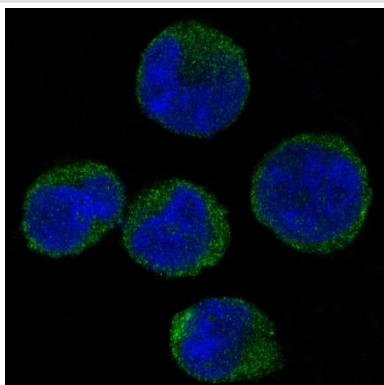
## Images



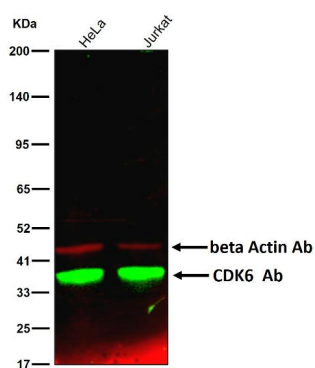
All lanes use the Antibody at 1:5000 dilution for 1 hour at room temperature.



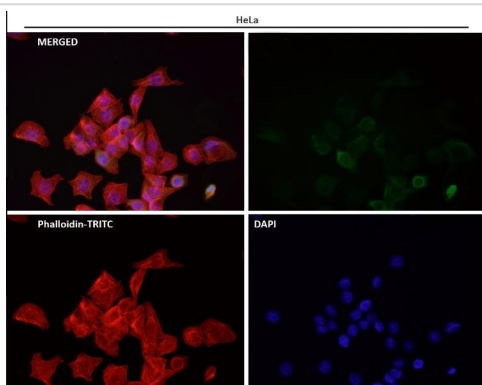
Immunohistochemical analysis of paraffin-embedded human lung cancer, using CDK6 Antibody.



Immunofluorescent analysis of K562 cells, using CDK6 Antibody.



All lanes use the Antibody at 1:1K dilution for 1 hour at room temperature.



Immunofluorescent analysis using the Antibody at 1:50 dilution.

## Background

Serine/threonine-protein kinase involved in the control of the cell cycle and differentiation; promotes G1/S transition. Phosphorylates pRB/RB1 and NPM1. Interacts with D-type G1 cyclins during interphase at G1 to form a pRB/RB1 kinase and controls the entrance into the cell cycle.

Note: This product is for in vitro research use only