

SAE1 Antibody

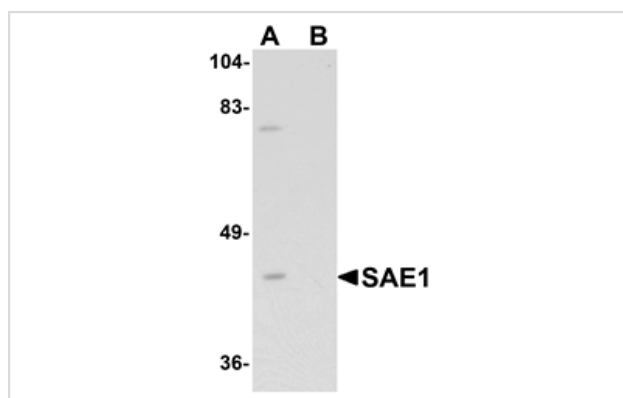
Catalog No: #25115

Orders: order@signalwayantibody.comSupport: tech@signalwayantibody.com

Description

Product Name	SAE1 Antibody
Host Species	Rabbit
Clonality	Polyclonal
Purification	Affinity chromatography purified via peptide column
Applications	ELISA WB
Species Reactivity	Hu Ms Rt
Immunogen Type	Peptide
Immunogen Description	Raised against a 20 amino acid peptide near the carboxy terminus of human SAE1.
Target Name	SAE1
Other Names	SUMO1 activating enzyme subunit 1, AOS1, SUA1, UBLE1A, HSPC140
Accession No.	Swiss-Prot:Q9UBE0Gene ID:10055
Uniprot	Q9UBE0
GeneID	10055;
Concentration	1mg/ml
Formulation	Supplied in PBS containing 0.02% sodium azide.
Storage	Can be stored at -20°C, stable for one year. As with all antibodies care should be taken to avoid repeated freeze thaw cycles. Antibodies should not be exposed to prolonged high temperatures.

Images



Western blot analysis of SAE1 in SK-N-SH lysate with SAE1 antibody at 1 ug/mL in (A) the absence and (B) the presence of blocking peptide.

Background

Small ubiquitin-like modifiers (SUMOs) are a family of small, related proteins (SUMO-1/2/3/4) that can be enzymatically attached to a target protein by a post-translational modification process termed sumoylation, a major regulator of protein function in cellular processes such as nuclear transport, transcriptional regulation, apoptosis and protein stability. This sumoylation is effected by the heterodimeric enzyme SAE1/SAE2 and the SUMO-1-conjugating enzyme Ubch9. The sumoylation pathway mediated by SAE1/SAE2 is distinct from other ubiquitin-like protein (Ubl) pathways.

Note: This product is for in vitro research use only