

CLPP Rabbit mAb

Catalog No: #52222



Package Size: #52222-1 50ul #52222-2 100ul

Orders: [order@signalwayantibody.com](mailto:order@signalwayantibody.com)  
Support: [tech@signalwayantibody.com](mailto:tech@signalwayantibody.com)

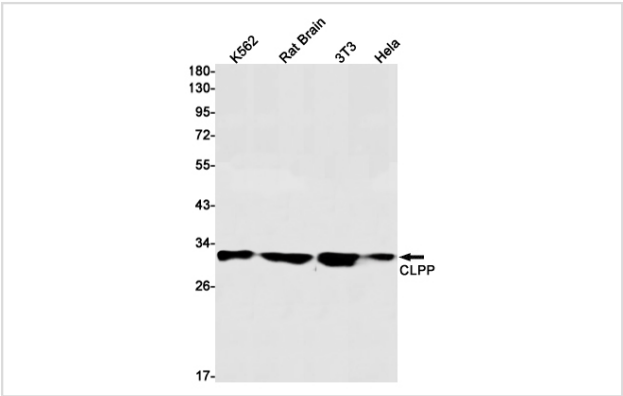
Description

Product Name	CLPP Rabbit mAb
Host Species	Recombinant Rabbit
Clonality	Monoclonal antibody
Clone No.	S02-1E5
Isotype	Rabbit IgG
Purification	Affinity Purified
Applications	WB
Species Reactivity	Human,Mouse,Rat
Immunogen Description	A synthetic peptide of human CLPP
Conjugates	Unconjugated
Modification	Unmodification
Other Names	DFNB81; PRLTS3
Accession No.	Swiss-Prot:Q16740GeneID:8192
Uniprot	Q16740
GeneID	8192
Calculated MW	Calculated MW: 30 kDa; Observed MW: 30 kDa
Concentration	0.3 mg/ml
Formulation	50mM Tris-Glycine(pH 7.4), 0.15M NaCl, 40% Glycerol, 0.01% Sodium azide and 0.05% BSA
Storage	Store at 4°C short term. Aliquot and store at -20°C long term. Avoid freeze/thaw cycles.

Application Details

WB: 1/1000-1/5000;

Images



Western blot detection of CLPP in K562,Rat Brain,3T3,Hela cell lysates using CLPP Rabbit mAb(1:1000 diluted).Predicted band size:30kDa.Observed band size:30kDa.

## Background

---

Swiss-Prot Acc.Q16740. Protease component of the Clp complex that cleaves peptides and various proteins in an ATP-dependent process. Has low peptidase activity in the absence of CLPX. The Clp complex can degrade CSN1S1, CSN2 and CSN3, as well as synthetic peptides (in vitro) and may be responsible for a fairly general and central housekeeping function rather than for the degradation of specific substrates.

---

Note: This product is for in vitro research use only