

Cyclin A2 Rabbit mAb

Catalog No: #52236

Package Size: #52236-1 50ul #52236-2 100ul

Orders: order@signalwayantibody.com

Support: tech@signalwayantibody.com

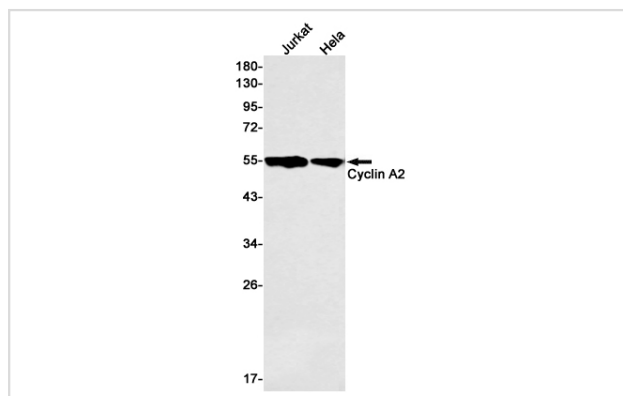
Description

Product Name	Cyclin A2 Rabbit mAb
Host Species	Recombinant Rabbit
Clonality	Monoclonal antibody
Clone No.	S02-3H6
Isotype	Rabbit IgG
Purification	Affinity Purified
Applications	WB IHC IF
Species Reactivity	Human
Immunogen Description	Recombinant protein of human Cyclin A2
Conjugates	Unconjugated
Modification	Unmodification
Other Names	CCN1; CCNA
Accession No.	Swiss-Prot:P20248GenelD:890
Uniprot	P20248
GenelD	890
Calculated MW	Calculated MW: 49 kDa; Observed MW: 55 kDa
Concentration	0.3 mg/ml
Formulation	50mM Tris-Glycine(pH 7.4), 0.15M NaCl, 40% Glycerol, 0.01% Sodium azide and 0.05% BSA
Storage	Store at 4°C short term. Aliquot and store at -20°C long term. Avoid freeze/thaw cycles.

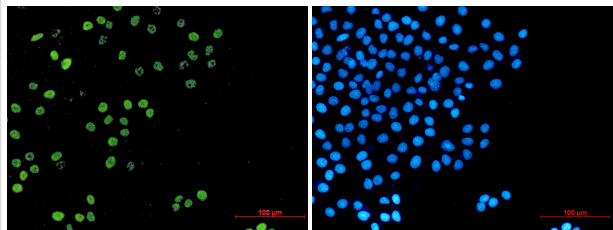
Application Details

WB: 1/1000; IHC: 1/200; ICC/IF: 1/50;

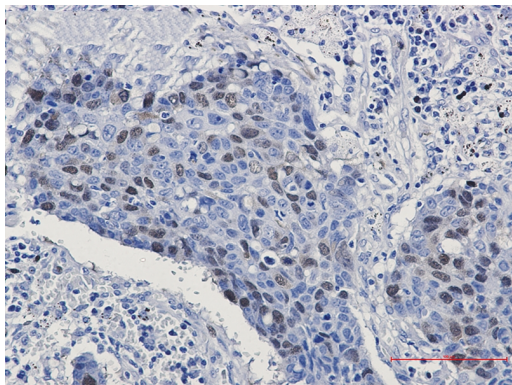
Images



Western blot detection of Cyclin A2 in Jurkat, HeLa cell lysates using Cyclin A2 Rabbit mAb (1:500 diluted). Predicted band size: 49 kDa. Observed band size: 49 kDa.



Immunofluorescence of Cyclin A2 (green) in HeLa using Cyclin A2 Rabbit mAb at dilution 1/5, and DAPI (blue)



Immunohistochemistry of Cyclin A2 in paraffin-embedded Human lung cancer tissue using Cyclin A2 Rabbit mAb at dilution 1/50

Background

Swiss-Prot Acc.P20248.Cyclin which controls both the G1/S and the G2/M transition phases of the cell cycle. Functions through the formation of specific serine/threonine protein kinase holoenzyme complexes with the cyclin-dependent protein kinases CDK1 or CDK2. The cyclin subunit confers the substrate specificity of these complexes and differentially interacts with and activates CDK1 and CDK2 throughout the cell cycle.

Note: This product is for in vitro research use only