

## EWSR1 Rabbit mAb

Catalog No: #52274

Package Size: #52274-1 50ul #52274-2 100ul

Orders: [order@signalwayantibody.com](mailto:order@signalwayantibody.com)Support: [tech@signalwayantibody.com](mailto:tech@signalwayantibody.com)

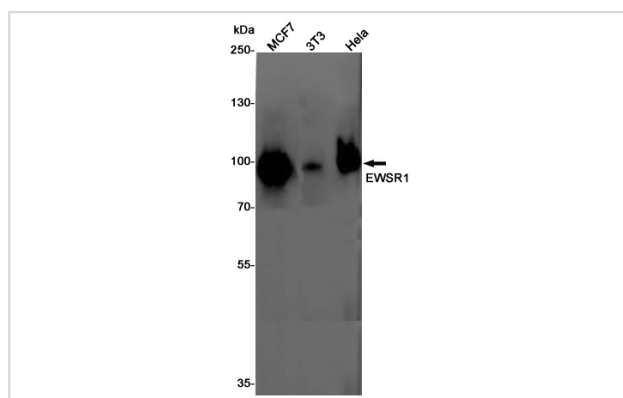
## Description

Product Name	EWSR1 Rabbit mAb
Host Species	Recombinant Rabbit
Clonality	Monoclonal antibody
Clone No.	S09-3A7
Isotype	Rabbit IgG
Purification	Affinity Purified
Applications	WB IF
Species Reactivity	Human,Mouse,Rat
Immunogen Description	A synthetic peptide of human EWSR1
Conjugates	Unconjugated
Modification	Unmodification
Other Names	EWS; EWS-FLI1; bK984G1.4
Accession No.	Swiss-Prot:Q01844GeneID:2130
Uniprot	Q01844
GeneID	2130
Calculated MW	Calculated MW: 69 kDa; Observed MW: 85 kDa
Concentration	0.3 mg/ml
Formulation	50mM Tris-Glycine(pH 7.4), 0.15M NaCl, 40% Glycerol, 0.01% Sodium azide and 0.05% BSA
Storage	Store at 4°C short term. Aliquot and store at -20°C long term. Avoid freeze/thaw cycles.

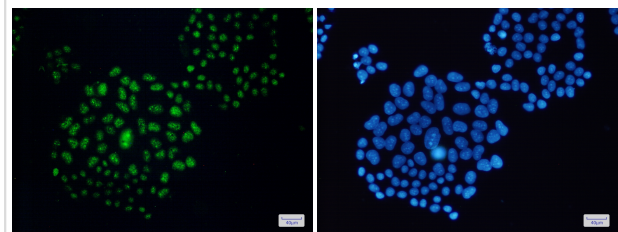
## Application Details

WB: 1/2000-1/10000; ICC/IF: 1/50-1/200

## Images



Western blot detection of EWSR1 in MCF7,3T3,Hela cell lysates using EWSR1 Rabbit mAb(1:1000 diluted).Predicted band size:69KDa.Observed band size:85KDa.



Immunofluorescence of EWSR1(green) in HeLa cells using EWSR1 Rabbit mAb at dilution 1/50, and DAPI(blue)

## Background

Swiss-Prot Acc.Q01844.Might normally function as a transcriptional repressor. EWS-fusion-proteins (EFPS) may play a role in the tumorigenic process. They may disturb gene expression by mimicking, or interfering with the normal function of CTD-POLII within the transcription initiation complex. They may also contribute to an aberrant activation of the fusion protein target genes.

Note: This product is for in vitro research use only