

GABARAPL2 Rabbit mAb

Catalog No: #52298



Package Size: #52298-1 50ul #52298-2 100ul

Orders: [order@signalwayantibody.com](mailto:order@signalwayantibody.com)  
Support: [tech@signalwayantibody.com](mailto:tech@signalwayantibody.com)

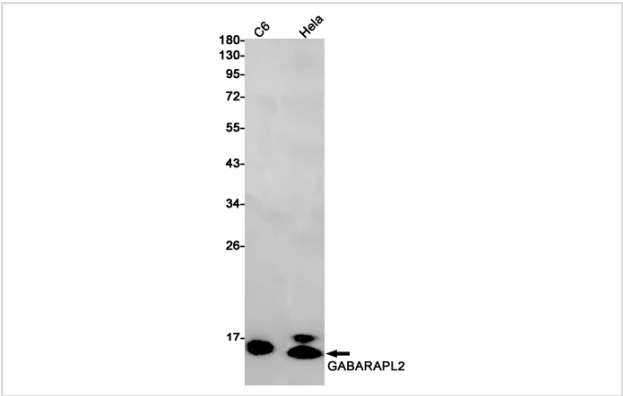
Description

Product Name	GABARAPL2 Rabbit mAb
Host Species	Recombinant Rabbit
Clonality	Monoclonal antibody
Clone No.	S03-7J2
Isotype	Rabbit IgG
Purification	Affinity Purified
Applications	WB
Species Reactivity	Human,Mouse,Rat
Immunogen Description	A synthetic peptide of human GABARAPL2
Conjugates	Unconjugated
Modification	Unmodification
Other Names	ATG8; GEF2; ATG8C; GEF-2; GATE16; GATE-16
Accession No.	Swiss-Prot:P60520GenelD:11345
Uniprot	P60520
GenelD	11345
Calculated MW	Calculated MW: 14 kDa; Observed MW: 14 kDa
Concentration	0.3 mg/ml
Formulation	50mM Tris-Glycine(pH 7.4), 0.15M NaCl, 40% Glycerol, 0.01% Sodium azide and 0.05% BSA
Storage	Store at 4°C short term. Aliquot and store at -20°C long term. Avoid freeze/thaw cycles.

Application Details

WB: 1/1000

Images



Western blot detection of GABARAPL2 in C6,HeLa cell lysates using GABARAPL2 Rabbit mAb(1:1000 diluted).Predicted band size:14kDa.Observed band size:14kDa.

## Background

Swiss-Prot Acc.P60520.Ubiquitin-like modifier involved in intra-Golgi traffic. Modulates intra-Golgi transport through coupling between NSF activity and SNAREs activation. It first stimulates the ATPase activity of NSF which in turn stimulates the association with GOSR1 . Involved in autophagy. Plays a role in mitophagy which contributes to regulate mitochondrial quantity and quality by eliminating the mitochondria to a basal level to fulfill cellular energy requirements and preventing excess ROS production. Whereas LC3s are involved in elongation of the phagophore membrane, the GABARAP/GATE-16 subfamily is essential for a later stage in autophagosome maturation.

Note: This product is for in vitro research use only