

Iba1 Rabbit mAb

Catalog No: #52353



Package Size: #52353-1 50ul #52353-2 100ul

Orders: order@signalwayantibody.com
Support: tech@signalwayantibody.com

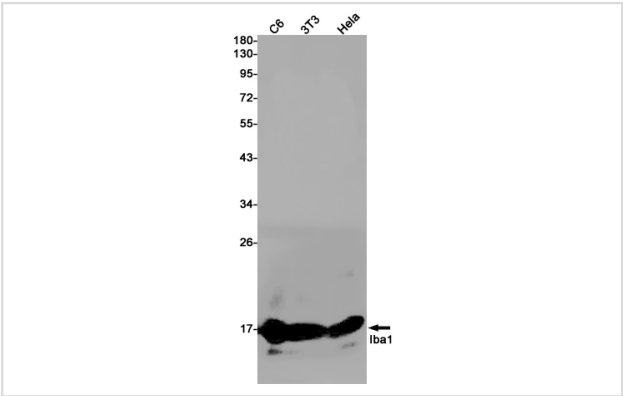
Description

Product Name	Iba1 Rabbit mAb
Host Species	Recombinant Rabbit
Clonality	Monoclonal antibody
Clone No.	S06-8B5
Isotype	Rabbit IgG
Purification	Affinity Purified
Applications	WB IHC
Species Reactivity	Human,Mouse,Rat
Immunogen Description	A synthetic peptide of human Iba1
Conjugates	Unconjugated
Modification	Unmodification
Other Names	G1; Iba1; AIF-1; AI607846; D17H6S50E
Accession No.	Swiss-Prot:O70200GeneID:11629
Uniprot	O70200
GeneID	11629
Calculated MW	Calculated MW: 17 kDa; Observed MW: 17 kDa
Concentration	0.3 mg/ml
Formulation	50mM Tris-Glycine(pH 7.4), 0.15M NaCl, 40% Glycerol, 0.01% Sodium azide and 0.05% BSA
Storage	Store at 4°C short term. Aliquot and store at -20°C long term. Avoid freeze/thaw cycles.

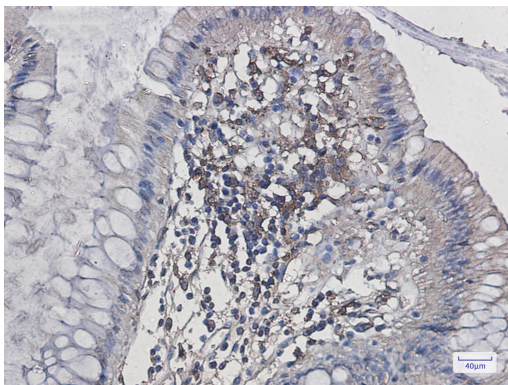
Application Details

WB: 1/1000; IHC: 1/20-1/500

Images



Western blot detection of Iba1 in C6,3T3,Hela cell lysates using Iba1 Rabbit mAb(1:1000 diluted).Predicted band size:17kDa.Observed band size:17kDa.



Immunohistochemistry of Iba1 in paraffin-embedded Human colon cancer tissue using Iba1 Rabbit mAb at dilution 1/20

Background

Swiss-Prot Acc.O70200. Actin-binding protein that enhances membrane ruffling and RAC activation. Enhances the actin-bundling activity of LCP1. Binds calcium. Plays a role in RAC signaling and in phagocytosis. May play a role in macrophage activation and function. Promotes the proliferation of vascular smooth muscle cells and of T-lymphocytes. Enhances lymphocyte migration. Plays a role in vascular inflammation.

Note: This product is for in vitro research use only